



Patient Story-
Gerald Dillard
See Page 3



KVH Family
Medicine-
Cle Elum back
full swing after
January flood
See Page 4

Kittitas County Public Hospital District 2

Spring 2019



Report to the Community

A Plan in Motion

With plans for a new Medic One ambulance garage in the design phase, a new ambulance added to the Medic One fleet, and a new commissioner recently appointed to the Board, HD2 is moving forward with its strategic goals and objectives.

In November of 2017, the Kittitas County Public Hospital District #2 (HD2) Board of Commissioners adopted a strategic plan to outline the internal and community priorities of HD2 over the next few years. The plan outlines goals and objectives that focus on patient care access, fiscal security, strategic relationships, and Board succession planning.

The strategic plan outlines four overarching goals that HD2 will work to accomplish over the next few years. These goals are: ensure access to care, ensure continued fiscal strength for HD2, identify and foster strategic relationships, and develop a Board succession plan.

**Insert quote from HD2 commissioner here*

- HD2 Board Commissioner

Along with these goals, the plan also outlines objectives to supplement and aid in accomplishing them. These objectives include: developing a master campus and vision plan for HD2, enabling the provision of needed services, identifying ways to reduce operating costs, and identifying ways to increase revenue.

Insert quote from Board Commissioner here

Message From the Board President

As the year progresses, Hospital District 2 is moving forward with its plans for the future. As part of our long-term campus plan, we are currently designing a new medic garage facility to replace the existing one, which no longer meets our EMS needs. In late April, we also brought in a new ambulance that will assist in addressing our increase in call volume and keeping our medic units current.

We are also continuing to work closely with EMS providers throughout Kittitas County to ensure provision of the best care to the members of our community.

We are proud to serve the residents of Upper Kittitas County and appreciate your on-going support.

*Floyd
Rogalski*



Plans Initiated for New Medic One Ambulance Garage

As part of their Master Campus Vision and Plan, Hospital District 2 is working on a new ambulance garage project for Medic One. The project is currently in the design phase. The name of the garage will be Medic One Station 99.

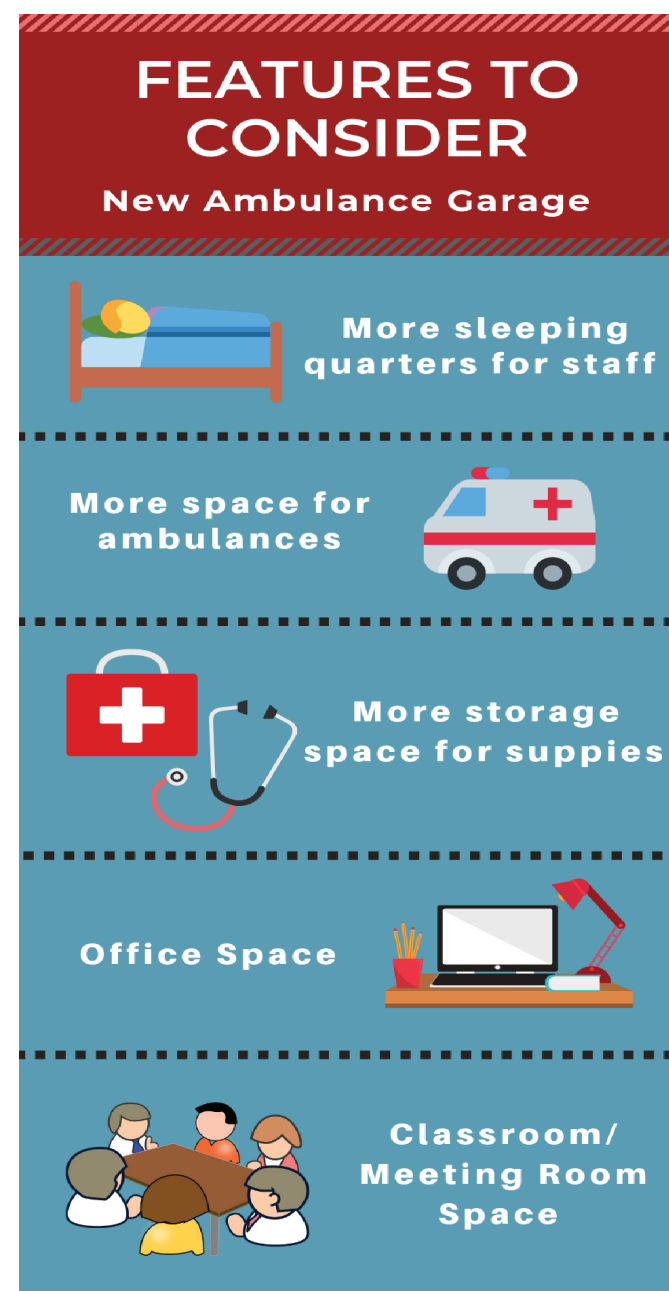
Funding for the new ambulance garage will come from funds generated from EMS operations and existing reserves.

The need for an updated facility has been evident for years. The current Medic One ambulance garage was a medical clinic that was built in 1950. With only 3 sleeping quarters and 2 ambulance bays, the facility does not provide enough bedrooms for staff or space for ambulances. Due to this lack of space, Medic One rents 2 additional ambulance bays from Kittitas County Fire District 7. The existing ambulance garage also does not provide enough room for storing supplies, and does not have enough space for staff offices or classroom/meeting rooms.

Additionally, the ambulance garage does not have windows that open, does not have a ventilation system, and the floors are not easy to clean.

"The construction of a new garage will not only expand space for Medic One ambulances and staff, it will also allow Medic One to operate in a comfortable, safe, and efficient environment," said Geoff Scherer, Operations Manager for Upper Kittitas County Medic One.

The exact size and features of the ambulance garage are still being determined. Commissioners and staff have toured other ambulance quarters to aid in deciding on the most efficient and functional building design. No start date for construction has been set.



Medic One Adds New Ambulance to Their Fleet

On April 22, Medic One put a new ambulance into service. The new addition is a 2018 Dodge Ram 3500.

This is the first new vehicle that Medic One has brought in since purchasing two medic units in 2016, after they began running two 24-hour ambulances. With the new addition, Medic One will now have a fleet of four, with a back-up for every first-out vehicle.

The primary reason for purchasing the new ambulance is to maintain current medic units. Medic One operates two ambulances per day. On average, each ambulance drives 3,500-4,000 miles per month. Vehicles are rotated at approximately 150,000 miles.

The new addition will also be very beneficial to Medic One and the residents of Upper County in the winter months. It will perform better on treacherous roadways, therefore getting to patients more quickly and getting patients to their destinations in a shorter amount of time.

With Medic One's recent increase in call volume, expanding the number of medic units will help ensure the continued provision of needed services to the residents of our community.





The Gift of Life

Patient Story: Gerald Dillard (pend.)

Paramedic Whit Hood-Lewis and Advanced EMT Matt Schauer met with one of the members of the community we serve after literally saving his life on April 28.

Jerry thought he had food poinsening and called 911 because he couldn't stop vomiting. While Whit and Matt were transporting, Jerry suffered a sudden cardiac arrest. Whit was able to defibrillate Jerry immediately and bring him back into a more stable rhythm.

With the help of two volunteer firefighters from Cle Elum Volunteer Fire Department and Kittitas County Fire Protection District #6, as well as their other medic unit (Medic 991) and Upper Kittitas County Professional Firefighters IAFF Local 5180, they were able to stabilize Jerry for transport to a Level 1 Cardiac Center. There, he had a stent placed in an occluded coronary artery.

While meeting with Medic One, Jerry said, "You guys don't just save lives; you give life." We are proud to serve our communities, and will always be here when you need us.



Medic One 2018 Quick Facts



1,455 Calls for help



1,159 Patients



806 Patient transports



Saturday Busiest day

Urgent Care 2018 Quick Facts



4,211 Visits



Saturday Busiest day



- Top 5 Reasons for Visits
- Respiratory Infection
 - Contusions/sprains/strains
 - Lacerations
 - Ear conditions
 - Abdominal pain/nausea/vomiting

Our Partnerships

Open Door Health Clinic and Mobile Dental Van

- Patients seen for basic medical care/ mental health counselings: 96
- Patients seen for Urgent dental care: 105
- Value of Dental Care: \$60,000

Kittitas County Public Health Department Mobile Van

- Started offering services at HD2 Medic One in 2018
- Total visits in 2018: 25
- Number of people who stopped in: 4 (one person used medical services, one health insurance sign-up)

Hospice Friends

- Added new Cle Elum location July 2018

Hospital District 1 provides subsidy in support of Urgent Care Services



Meet the New Commissioner: Melissa Becker

Melissa was appointed to the Board of Commissioners in March 2019.

With 20 years in the corporate financial world and thirteen years teaching finance and accounting at Central Washington University, Melissa also has a long history of philanthropic work with Upper Kittitas County Dollars for Scholars and the Cle Elum-Roslyn School District. She has served as Race Director for The Runner Stumbles, benefiting the Cle Elum Kiwanis.

Hospital District #2
Board of Commissioners

Floyd Rogalski
Hartwig Vatheuer
Fred Benjamin
Kevin Nicholson
Melissa Becker

KVH Family Medicine - Cle Elum is back and fully operational after the January sprinkler flood.

We are grateful for the overwhelming amount of support and assistance with getting us back in full swing.





KVH Urgent Care- Cle Elum

214 W 1st Street • 509-674-6944

- Fever
- Earache
- Sore Throat
- Flu-like Symptoms
- Colds
- Vomiting
- Diarrhea
- Minor Allergic Reactions
- Asthma Attacks
- Simple Fractures
- Simple Wounds

Daily Drop-In Care
10 a.m.-10 p.m.