



Kittitas County Public Hospital District No. 2 BOARD OF COMMISSIONERS' MEETING

May 18, 2020
6:30 p.m.

Conference Call Meeting
Toll-Free Number: 877-853-5257 US
Meeting ID: 258 476 6248

AGENDA

- I. **Introductions**
- II. **Approval of Agenda**
- III. **Approval of Minutes**
 - a. April 20, 2020 (Regular Meeting)*
- IV. **Public Comments/Announcements/Correspondence**
Suspended while under governor's Proclamation
- V. **Reports:**
 - a. Operations Report (G. Scherer)
 - b. Superintendent's Report (J. Petersen)
 - c. Ancillary Report (R. Holden)
 - d. Finance Report, Approval of Expenses* (S. Olander)
 - e. Ambulance Garage* (R. Holden)
 - a. Cost Estimate
- VI. **Old Business**
 - a. Combining Parcels* (R. Holden)
- VII. **New Business**
 - a. Small Works Roster* (S. Olander)
 - b. Next Meeting Date: June 15, 2020
- VIII. **Executive Session RCW 42.30.110(d)**
- IX. **Adjournment**

Note: Upcoming Agenda Items

- Medic One Unique Service - TBD
- Open Door Clinic Quarterly Report



Kittitas County Public Hospital District #2

BOARD MEETING MINUTES

Meeting Date: Monday: April 20, 2020
Minutes of: Regular Meeting of the Board of Commissioners
Meeting Place: Remote via telephone
Minutes Submitted By: Scott Olander, Treasurer

Call to Order:

Regular Meeting: Call to order made by Commissioner Rogalski at 6:30 p.m.

Introductions:

Commissioners: Floyd Rogalski, Melissa Becker, Fred Benjamin, Hartwig Vatheuer (excused) and Kevin Nicholson. Superintendent: Julie Petersen; Treasurer: Scott Olander; Ancillary Operations: Rhonda Holden; EMS Manager: Geoff Scherer.

Approval of Agenda:

Action: A motion to approve the agenda was made by Commissioner Nicholson and seconded by Commissioner Benjamin. Motion carried.

Approval of Minutes:

Action: A motion to approve the minutes of the March 16, 2020 Regular Meeting was made by Commissioner Benjamin and seconded by Commissioner Nicholson. Motion carried.

Public Comments/Announcements/Correspondence:

None.

Operations Report:

The Commissioners reviewed the written operations report and operating statistics for March 2020. There were a total of 54 transports in March; 15 below the monthly budget. YTD Medic One is 26 transports below budget. The negative variance in transports is related to the Governor's stay at home and social distancing orders. Julie commented that patient volume in the hospital and in KVH's clinics is 50% of normal due to Covid-19 fears and the stay at home order. Geoff advised that Medic 8, (the new ambulance) is expected to be completed the end of June 2020. The later delivery date is due to pandemic related work slowdowns. M7 is back in service and M6 is in the repair shop for brake and differential work. In preparation for Covid-19 patient transports Geoff has spent a lot of time attending Incident Command meetings.

Superintendent's Report:

Julie reported that KVH has been focused on Covid-19 related preparations. Julie added that KVH ER visits is 50% of normal and surgery volume is down over 60%. As Covid-19 has evolved in Kittitas County the focus has shifted to patient care in the long term care facilities and containing Covid-19 in the facility if patients or staff become infected. Vice Admiral Bono recently visited KVH and was impressed with KVH's Covid-19 plans and preparation. Kittitas County's current Covid-19 infection rate is low and stable, however there is concern that the infection rate in the fall will increase and there will be a surge of Covid-19 patients.

Ancillary Report:

The Commissioners reviewed the written ancillary report. Rhonda advised that ancillary services at KVH have reopened for non-emergent scheduled services.

Finance Report:

The financial statements for March 2020 were reviewed by the Commissioners. The review included a review of actual versus budgeted revenue and expense variances. As noted by Geoff during the Operations Report, March transports were below budget by 15 transports. YTD transports are 26 transports below budget. Total Revenue for March is \$31,913 below budget. March contractual adjustments had a positive variance of \$26,708 because the Health Care Authority is including estimates for GEMT funding with the Medicaid and MCO payments. If transport volumes continue to decline there may be repayment required of excess GEMT payments. Overall expenses for March exceeded budget by \$10,001. Wages exceeded budget by \$6,129 due to backfilling for a medical leave. Supplies exceeded budget by \$8,068 because District 2 purchased some extra PPE supplies that were available. Medic one posted a Net Loss for March of \$6,537 compared to budgeted Net Income of \$5,784 a negative variance of \$12,321. YTD Net Income is \$8,326; a negative variance of \$7,034.

Action: A motion to approve the checks for March was made by Commissioner Nicholson and seconded by Commissioner Benjamin. Motion carried.

Ambulance Garage:

Rhonda provided an update about garage site tree removal and site preparation plans. She mentioned that there will need to be coordination with the Department of Natural Resources and the Department of Ecology to prepare the site for the garage. The city of Cle Elum is willing to work with the District to rezone the property and join land parcels.

Executive Session:

There was no executive session.

New Business:

Next regular meeting date: May 18, 2020 at KVH Family Medicine Cle Elum. Due to the Covid19 outbreak the meeting may be done via telephone or via teleconference.

Announcements:

There being no further business the regular meeting was adjourned at 7:12 p.m. by Commissioner Rogalski.

Operation's Manager Report – April 2020

	April 2020	April 2019
Calls for Service	73	119
Patient Count	63	81
Patient Transports	40	62
Patient Refusals	11	12
Year to Date Transports	218	281
Station #73 Transports	17	
Station # 99 Transports	23	
Passed Calls	0	

PERSONNEL

The crews have been healthy, sick time usage has been about average, no positive COVID-19 in the staff. Only 12 hours of childcare issues related to covid-19. The crews have only responded or transported 2 known positive covid-19 patients this month.

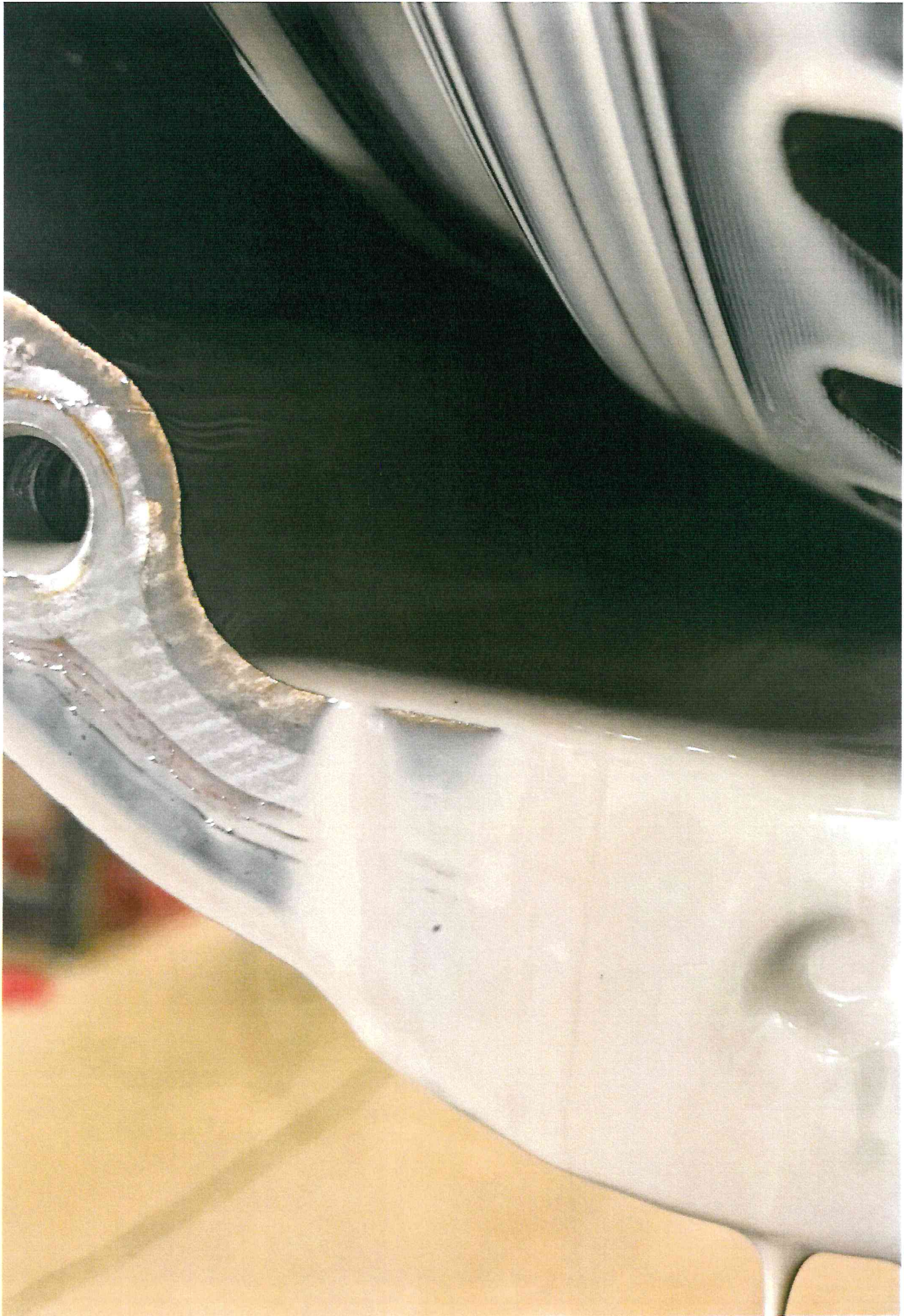
APPARATUS

M8 box is out of paint and having wiring installed, here is the website to look at the progress <https://www.braunnw.com/popup.php?id=2046> Delivery date may be sooner than last reported, first part of June end of May. Attached are some photos from last month's M7 differential issues.

Year	Unit	Beg ODO	End ODO	Miles	Location	Comments
2018	M7	33,708	33,748	40	Station 73	Back Up
2016	M6	104,730	104,754	24	Station 99	Back Up
2016	M5	123,207	125,518	2,311	Station 99	1 st Out
2014	M4	154,811	156,821	2,010	Station 73	1 st Out
Total	Miles			4,285		

MISCELLANEOUS

- PPE inventory continues to be a discussion topic among the agencies and Incident Management Team. Medic One continues to monitor our PPE daily and report out to IMT twice a week. I continue to look for alternative avenues of procurement for these supplies.
- I have been working with Steve Chrisman and the A-Team to help onboard some of our community paramedic patients, the A-Team received a grant to start and implement an electronic patient care record that can be viewed by all disciplines.
- Incident Command meetings have gone from daily to Monday and Fridays. We expect to have an uptick in the number of covid-19 like calls as the county starts to open back up and the recreation population returns.





Kittitas County Hospital District #2

Patient Transport Count per Destination - YTD 2020

Hospital	YTD	April	May	June
Central Washington Hospital	2	0		
Harborview	4	1		
KVH	162	32		
Snoqualmie Valley Hospital	9	0		
Swedish Issaquah	24	3		
Virginia Mason	2	1		
Yakima Regional	0	0		
Yakima Memorial	7	1		
Childrens	0	0		
University of Washington	0	0		
Valley Renton	0	0		
Overlake	7	2		

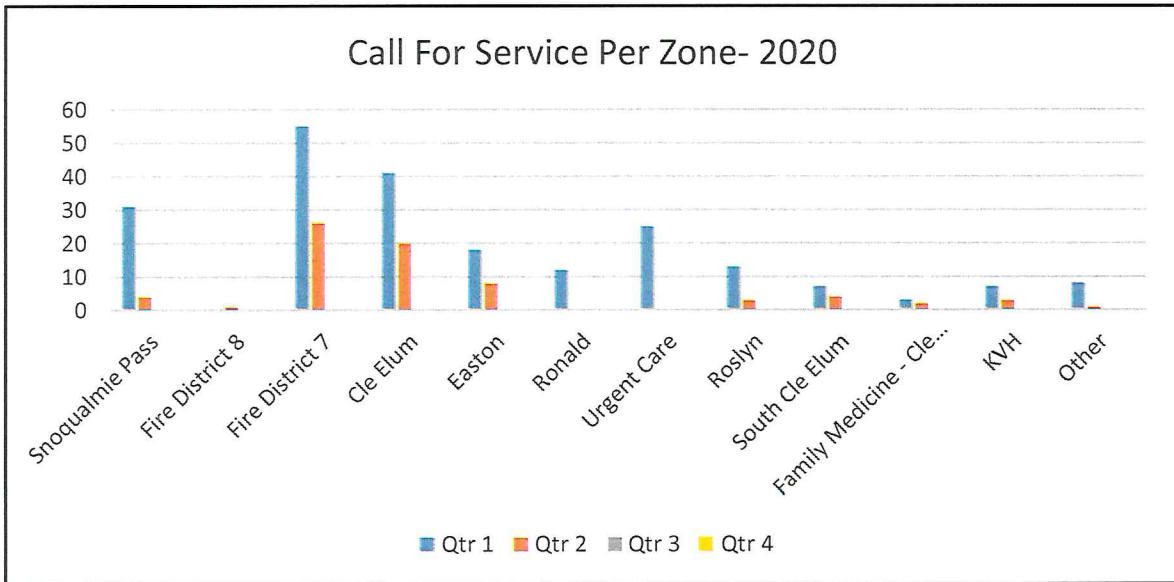
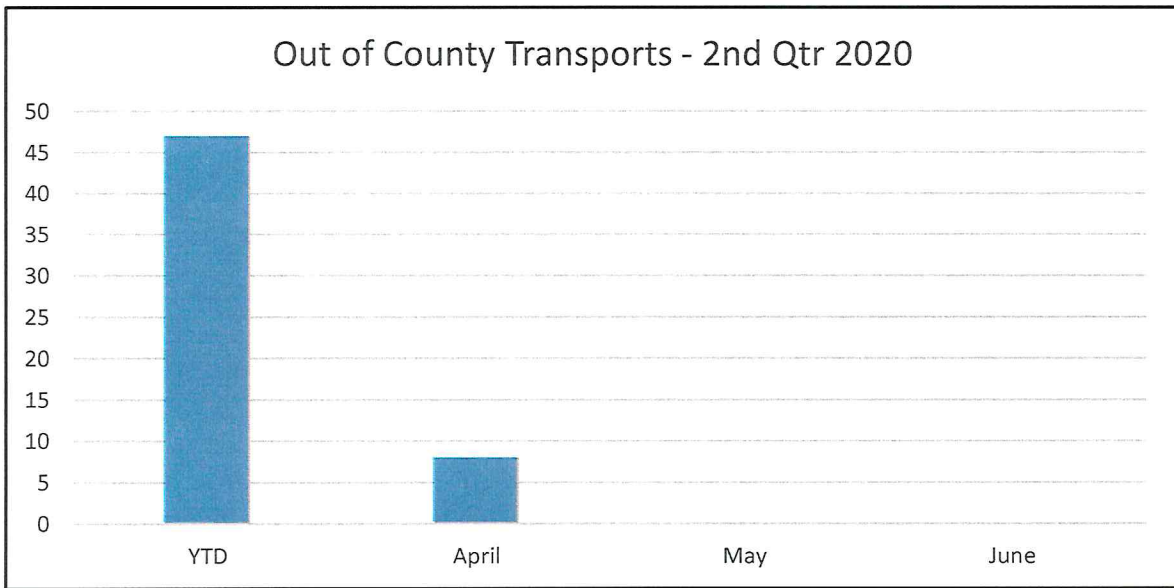
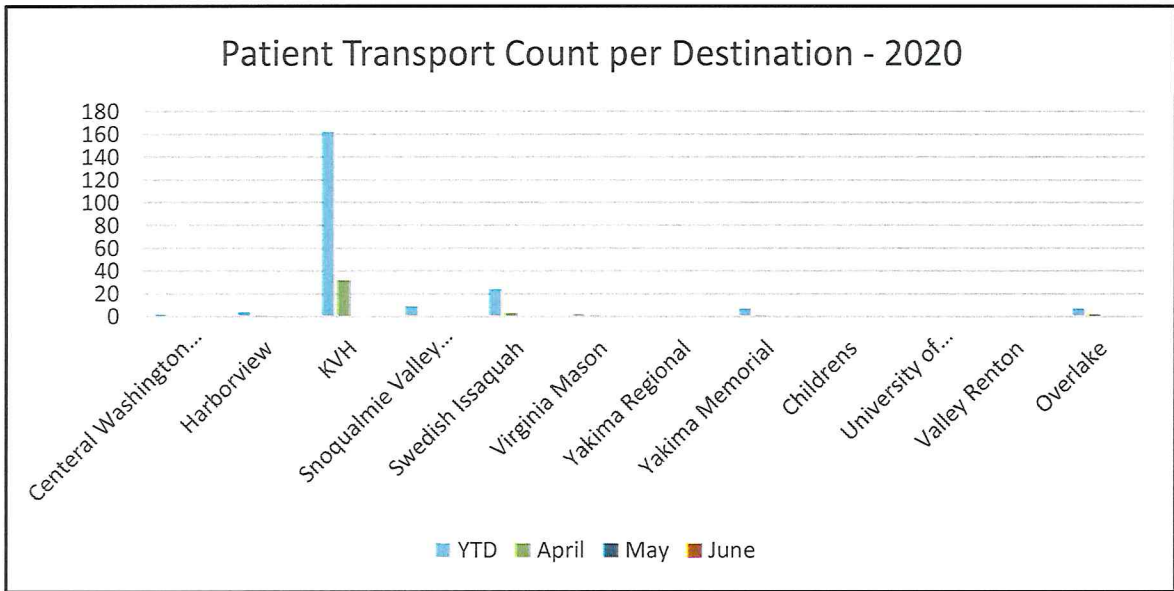
	YTD	April	May	June
Out of County Transports	47	8		

Call For Service Per Zone

Zone	YTD	April	May	June
Snoqualmie Pass	35	4		
Fire District 8	1	1		
Fire District 7	81	26		
Cle Elum	61	20		
Easton	26	8		
Ronald	12	0		
Urgent Care	25	0		
Roslyn	16	3		
South Cle Elum	11	4		
Family Medicine - Cle Elum	5	2		
KVH	10	3		
Other	9	1		

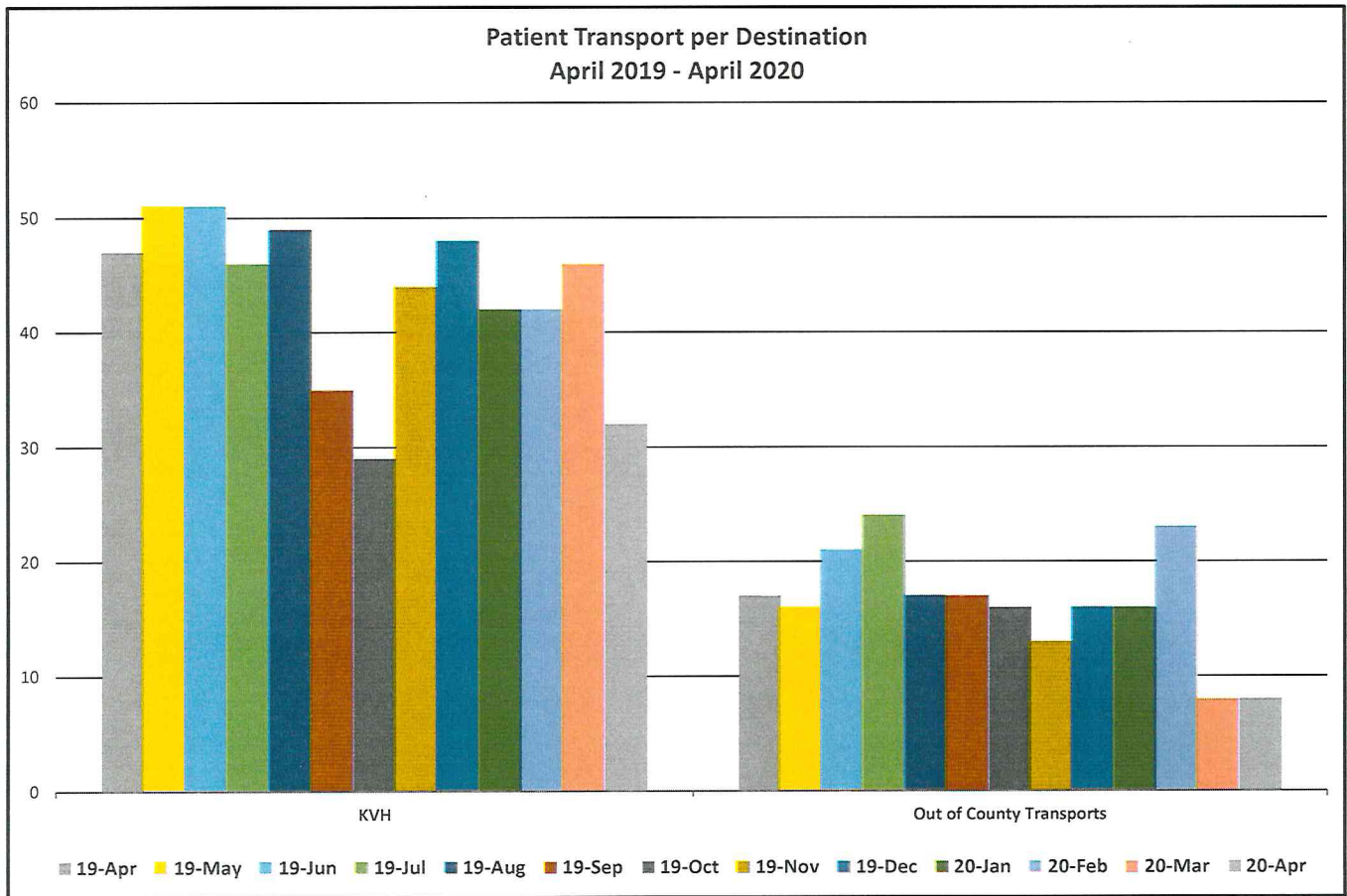
Zone	YTD	Qtr 1	Qtr 2	Qtr 3	Qtr 4
Snoqualmie Pass	35	31	4	0	0
Fire District 8	1	0	1	0	0
Fire District 7	81	55	26	0	0
Cle Elum	61	41	20	0	0
Easton	26	18	8	0	0
Ronald	12	12	0	0	0
Urgent Care	25	25	0	0	0
Roslyn	16	13	3	0	0
South Cle Elum	11	7	4	0	0
Family Medicine - Cle Elum	5	3	2	0	0
KVH	10	7	3	0	0
Other	9	8	1	0	0

Comments:



Patient Transport per Destination

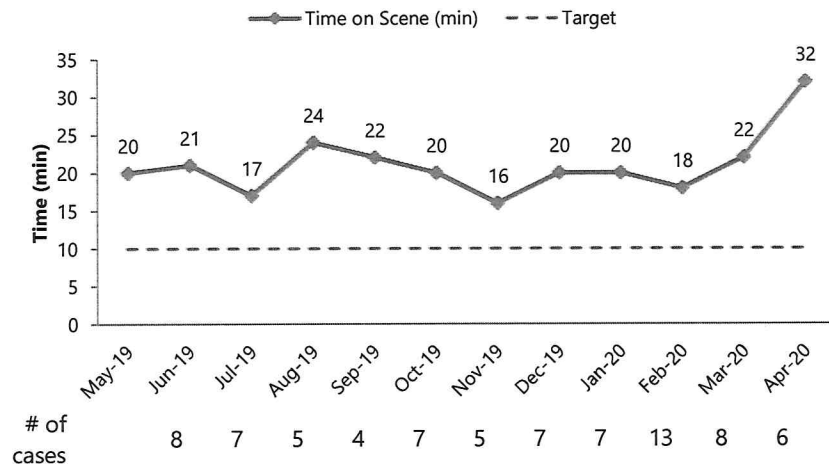
Hospital	19-Apr	19-May	19-Jun	19-Jul	19-Aug	19-Sep	19-Oct	19-Nov	19-Dec	20-Jan	20-Feb	20-Mar	20-Apr
Central Washington Hospital	0	0	2	0	0	1	0	0	0	0	1	1	0
Harborview	0	2	3	3	0	5	1	3	2	1	2	0	1
Snoqualmie Valley Hospital	1	0	3	6	1	4	0	0	2	1	8	0	0
Swedish Issaquah	9	7	2	6	3	9	5	2	6	7	8	6	3
Virginia Mason	1	2	2	1	1	1	1	2	0	0	1	0	1
Yakima Regional	1	0	3	1	3	1	2	0	1	0	0	0	0
Yakima Memorial	2	1	3	3	0	4	5	2	1	4	1	1	1
Children's	0	0	0	1	1	0	0	1	0	0	0	0	0
University of Washington	0	0	1	0	0	0	0	0	0	0	0	0	0
Valley Renton	0	0	0	0	0	0	0	1	1	0	0	0	0
Overlake	2	4	1	2	5	4	2	2	3	3	2	0	2
KVH	47	51	51	46	49	35	29	44	48	42	42	46	32
Out of County Transports	17	16	21	24	17	17	16	13	16	16	23	8	8



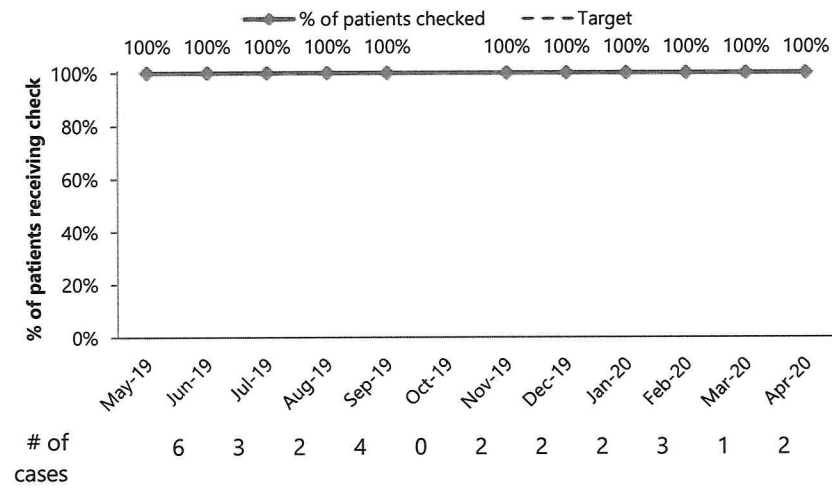
Kittitas County Public Hospital District No. 2

Quality Metrics

Time on Scene ↓ for trauma patients



Glucose Checked ↑ for patients with stroke symptoms





SUPERINTENDENT'S REPORT – Julie Petersen

May 2020

Kittitas County COVID 19 Response

As you doubtless have heard, the application submitted by Kittitas County to progress to phase 2 of the Governor's phased approach to reopen Washington has been placed on hold by the Washington State Department of Health. I have attached KVH's letter of support for the variance application together with the Governor's brief description of the four phases.

The application was under review when the outbreak at Twin City Foods was announced. The County's response was immediate, coordinated, and efficient. KVH assisted with the on-site testing of almost 200 TCF employees in less than eight hours. Results of the tests were returned in approximately 48 hours. Many of the patients who tested positive are symptomatic but they are managing their symptoms at home.

Over the weekend and since, the COVID clinic on the KVH campus has been testing 40+ patients a day. We continue to see new positives and previous negatives converting to positives. Patients converting to positive were more than likely tested too soon after exposure for the virus to be present in sampling.

The Kittitas County Public Health Department has begun case and contact investigations to contain the spread of the virus through isolation and quarantine. The individual patients and the employer have been cooperative throughout. The County, through partner agencies and as part of its response, is also able to provide wrap around services (food, housing, transportation) as necessary to those isolating and quarantining.

We believe that our Kittitas County agencies were prepared to respond to precisely the kind of outbreak that we anticipate we will encounter as we move forward. In the coming days we will issue a multi-agency letter to the Department of Health urging them to approve our County's application for variance. Both PHD #1 and PHD #2 will be signatories to the letter.

I will provide further updates at the meeting.



May 4, 2020

Kittitas County Board of Health:

Kittitas County Public Hospital District #1 operates Kittitas Valley Hospital (KVH).

KVH is currently authorized by the Washington State Department of Health to operate at an inpatient surge capacity of 61 beds. This licensed capacity exceeds current average daily census by approximately 46 patients. KVH is prepared to meet surge demands in our Emergency Department and in our ambulatory clinics as well as our Critical Care and Acute Care settings. KVH is prepared to staff, equip and supply surge volumes.

KVH has cross trained physicians, nurses and ancillary personnel to support additional inpatient volumes in the event of a prolonged surge. We have modified the physical plant to limit exposure to infection for both staff and patients. These modifications include airflow, physical barriers, alternative entrances, exits, patient routes and support space. KVH received additional hospital beds and ventilators from Kittitas County's Emergency Operations Center. The added equipment increases long term ventilator capacity from 7 to 10.

KVH is adhering to the Washington State Department of Health's PPE conservation guidelines. KVH has an on hand inventory of critical personal protective equipment that exceeds anticipated demand at surge capacity for 30+ days. KVH remains on allocation from routine vendors but we have developed new sources for masks, gowns, gloves and cleaning supplies to augment our traditional supply chain. These new suppliers include community donations, KC Emergency Operations Center and the Washington State Hospital Association.

In addition to PPE, KVH has increased on hand inventory of critical medical supplies, medical consumables, laboratory supplies (including test kits) and pharmaceuticals.

KVH has adequate bed capacity to serve our communities and adequate personal protective equipment to keep our workers safe.

Sincerely,

A handwritten signature in black ink, appearing to read 'Julie Petersen', written over a white background.

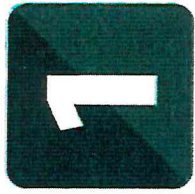
Julie Petersen, CEO

A handwritten signature in black ink, appearing to read 'Kevin Martin', written over a white background.

Dr. Kevin Martin, CMO

WASHINGTON'S PHASED APPROACH

Reopening Business and Modifying Physical Distancing Measures



Phase 1



Phase 2



Phase 3



Phase 4

High-Risk Populations*

Continue to Stay Home, Stay Healthy

Continue to Stay Home, Stay Healthy

Continue to Stay Home, Stay Healthy

Resume public interactions, with physical distancing

Recreation

Some outdoor recreation (hunting, fishing, golf, boating, hiking)

All outdoor recreation involving fewer than 5 people outside your household (camping, beaches, etc.)

Outdoor group rec. sports activities (5-50 people)
Recreational facilities at <50% capacity (public pools, etc.)

Resume all recreational activity

Gatherings (social, spiritual)

None
Drive in spiritual service with one household per vehicle

Gather with no more than 5 people outside your household per week

Allow gatherings with no more than 50 people

Allow gatherings with >50 people

Travel

Only essential travel

Limited non-essential travel within proximity of your home

Resume non-essential travel

Continue non-essential travel

Essential businesses open
Existing construction that meet agreed upon criteria
Landscaping
Automobile sales
Retail (curb-side pick-up orders only)
Car washes
Pet walkers

Remaining manufacturing
New construction
In-home/domestic services (nannies, housecleaning, etc.)
Retail (in-store purchases allowed with restrictions)
Real estate
Professional services/office-based businesses (telework remains strongly encouraged)
Hair and nail salons/Barbers
Housecleaning
Restaurants <50% capacity table size no larger than 5

Restaurants <75% capacity/ table size no larger than 10
Bars at <25% capacity
Indoor gyms at <50% capacity
Movie theaters at <50% capacity
Government
Telework remains strongly encouraged
Libraries
Museums
All other business activities not yet listed except for nightclubs and events with greater than 50 people

Nightclubs
Concert venues
Large sporting events
Resume unrestricted staffing of worksites, but continue to practice physical distancing and good hygiene

Business/ Employers

* High-risk populations are currently defined by CDC as: persons 65 years of age and older; people of all ages with underlying medical conditions (particularly but not well controlled) including people with chronic lung disease or moderate to severe asthma; people who have serious heart conditions; people who are immunocompromised; people with severe obesity; people with diabetes; people with chronic kidney disease; and people with liver disease; people who live in a nursing home or long-term care facility.

Ancillary Services report to Hospital District #2 Board of Commissioners
May 2020

Ancillary Service Operation Report:

- **Firehouse Subs Grant Application**

On behalf of HD2, Mitchell Rhodes is applying for a grant to purchase a transport ventilator and two butterfly ultrasounds for Medic One. He continues to research grant opportunities for the ambulance garage.

- **47@North (formerly known as Bullfrog Flats)**

On April 6 I responded to a request for information related to the Supplemental Impact Statement being developed for this project. We were requested to review the original proposal and the revised master plan. Given our heavy involvement in Covid-19 preparations I was not able to obtain input from HD#1 or HD#2 Commissioners, but did my best to respond to their questions. I've attached their request and my responses.

- **City of Cle Elum Storm Drain and Sidewalk Project**

We saw a reduction in patient volume at Urgent Care due to the Covid-19 pandemic and just as volumes were starting to increase again, they dropped off due to the difficulty accessing the building. The contractor has been agreeable to keep signs posted on how to access the clinic, but it is challenging at best. Patients are now entering the building through the staff entrance on the side of the building.

Respectfully submitted by Rhonda Holden, MSN, CENP



2200 Sixth Avenue, Suite 707
Seattle, WA 98121

TO: Rhonda Holden – Chief Nursing Officer, Kittitas Valley Healthcare

FROM: Jeff Ding – Planner, EA Engineering, Science and Technology

DATE: March 18, 2020

SUBJECT: **47° North Master Plan Project Supplemental Environmental Impact Statement (SEIS) – Kittitas Valley Healthcare Information Request**

I am writing to request information to assist in preparing the Supplemental Environmental Impact Statement (SEIS) for the proposed 47° North Master Plan Project. EA Engineering, Science and Technology is working with the City of Cle Elum on the SEIS for this project. The project site is located west of downtown Cle Elum and south of the Suncadia Resort, on the site formerly known as Bull Frog Flats (see the attached map for details). The SEIS for this project will supplement the 2002 UGA EIS that was completed by the City. We understand that Kittitas Valley Healthcare currently provides hospital and medical services to the 47° North Project site, and would continue to provide such service to future development. The information requested below is intended to help clarify Kittitas Valley Healthcare's services and standards, as well as assist in the analysis of potential impacts to hospital services from the development of the 47° North Project under the SEIS Alternatives.

To provide some general background on the project, in 2002 a Master Plan was approved for the 47° North site (formerly known as Bull Frog Flats) that included approximately 1,334 dwelling units (810 single family units and 524 multi-family units), a 75-acre business park, and a 7.5-acre site for affordable housing. These development assumptions were analyzed in the 2002 EIS as part of Alternative 5 and are included in this SEIS (No Action Alternative – Development under Approved Master Plan: Alternative 5). Recently, an agreement was entered into to sell approximately 824 acres of the site to Sun Communities who proposes to revise the Master Plan. The revisions would maintain the total number of residential units (1,334 units) but would reduce the number of single family residences to 527, reduce the number of multifamily residences to 180, and add an RV resort with 627 RV sites. A smaller commercial area (25 acres) is assumed for the site, as well as an adventure park, private recreational facilities, a site for a municipal recreation center, and a site for affordable housing.

The SEIS will assess the impacts of two alternatives for the 47^o North Project site: Alternative 6 – Revised Master Plan and a No Action Alternative: Development of Alternative 5 – Approved Master Plan. The following table provides a general breakdown of proposed development under the SEIS Alternatives 5 and 6 by phase.

**47 NORTH MASTER PLAN DEVELOPMENT
LAND USE ASSUMPTIONS BY PHASE – ALTERNATIVES 5 & 6**

Development Year	Alternative 5 Land Use Assumptions (Cumulative)	Alternative 6 Land Use Assumptions (Cumulative)
Year 2025	310 single family 469 multi-family 70,000 SF business park	264 single family 180 multi-family 627 RV sites 8,500 SF retail 6,500 SF restaurant
Year 2030	433 single family 524 multifamily 245,000 SF business park	527 single family 180 multi-family 627 RV sites 45,000 SF grocery store 17,000 SF restaurant 13,000 SF restaurant
Year 2037	587 single family 524 multi-family 490,000 SF business park	527 single family 180 multi-family 627 RV sites 45,000 SF grocery store 25,000 SF restaurant 20,000 SF restaurant 60,000 SF medical office
Buildout (2051 for Alternative 5 and 2037 for Alternative 6)	810 single family 524 multi-family 950,000 SF business park	Same as 2037

Notes:

1. The business park under Alt. 5 would include: light industrial, research and development, warehousing, offices, and retail uses.

At build out, Alt. 5 would also include one community center, one neighborhood recreation center, a lake with recreational opportunities, and trails available to the public.

2. At buildout, Alt. 6 would also include two recreational amenity centers (including fitness center, pool, playground, and sports court), one adventure center (including rope course, miniature golf, and laser tag), and trails available to the public.

To facilitate environmental review of the 47^o North Project, we need your help in providing the following information on the provision of hospital services. We ask that you provide us with your answers by email to jding@eaest.com. If possible, we would like to receive these answers by **April 1, 2020** in order to maintain our schedule. Thank you very much for your assistance and please feel free to contact me, Jeff Ding, at 206-452-5362 or via email if you have any questions.

1. Does Kittitas Valley Healthcare produce an annual report each year or maintain a capital facilities planning document? If so, could we please get a copy of the most recent versions?
2. It is our understanding that the Kittitas Valley Healthcare provides service to Kittitas County and other surrounding areas. The Kittitas Valley Healthcare Hospital is located at 603 S Chestnut Street in Ellensburg. The hospital is designated by the State of Washington as a Level IV trauma facility and provides an Emergency Department, Family Birthing Center, Pharmacy Services, Surgical Services, and Laboratory Services. Please confirm that this is accurate and provide the following information for the hospital:
 - The total number of hospital beds.
 - A breakdown of staffing for the hospital including number of doctors/physicians, physician's assistants and nurses.
3. It is also our understanding that Kittitas Valley Healthcare maintains an Urgent Care Clinic (214 W 1st Street) and a Family Medicine Clinic (201 Alpha Way) in the City of Cle Elum. Please provide details on the types of services at each of these facilities and the staffing levels at each (number of doctors/physicians, physician's assistants, and nurses).
4. Please provide information regarding the number of patients served each year by each of the facilities (Kittitas Valley Healthcare Hospital, the Cle Elum Urgent Care Clinic and the Cle Elum Family Medicine Clinic, respectively) for each of the past 5 years (i.e., 2015-2019).
5. Does Kittitas Valley Healthcare have any plans for additional staff, equipment, and/or facility expansions in the future (i.e., 10 – 20 years) without development of the 47^o North Project?
6. What level of patient volume would be anticipated with the potential development of the 47^o North SEIS Alternatives and how would that patient volume be affected based on the phasing of the project (see the table above for phasing details)? Would the majority of the potential patients be served by the facilities in the City of Cle Elum?
7. Does Kittitas Valley Healthcare have a model or methodology for projecting demands for service or staff and equipment needs? If so, could such a model be utilized for this SEIS?
8. Would there be any differences in patient volumes and demand for services from the various SEIS Alternatives?
9. Based on the level of development under the 47^o North SEIS Alternatives and potential increases in demand and patient volumes, does Kittitas Valley Healthcare anticipate that they would have adequate staffing, equipment, and facility space to meet the demand or would additional staff, equipment and/or space be required and if so, how many?
10. Would the phasing of the project have any effect on the ability of Kittitas Valley Healthcare to provide hospital and medical services to the site and if so, how would it affect them?

Thank you again for participating in the SEIS process for the 47^o North Project.



4/6/2020

To: Jeff Ding-Planner, EA Engineering, Science and Technology

From: Rhonda Holden, Chief Ancillary Officer

Subject: Requested Information for SEIS for 47 North Master Plan Project

I am writing in response to your request for information dated March 18, 2020. Let me begin by stating that Kittitas County has two Public Hospital Districts. I've included a slide that shows the approximate boundary line of the two hospital districts. Each Hospital District is governed by a Board of 5 elected Commissioners. I am an employee of Kittitas County Public Hospital District #1, d.b.a. Kittitas Valley Healthcare. In this role, I work very closely with Kittitas County Public Hospital District #2 and have assisted them on special projects and strategic planning.

Hospital District #2 extends to the top of Snoqualmie Pass at the King County line and includes the communities of Snoqualmie Pass, Easton, Ronald, Roslyn, Cle Elum and South Cle Elum. Hospital District #2 operates Medic One Ambulance Service which is housed in Cle Elum. They currently staff two ACLS ambulances 24/7 and add a third staffed ambulance when needed for special events. Each ambulance is staffed with an EMT and a Paramedic. Hospital District #2 also owns KVH Family Medicine Clinic, a 13,700 SF building in Cle Elum, which they lease to Kittitas Valley Healthcare (KVH). Hospital District #2 recently completed a Master Site Plan for their property where Medic One Station 99 and the Family Medicine Clinic are located. They are planning to build a new 7,500 SF Ambulance Garage on this property (to replace the current location). Prior to the Covid-19 Pandemic, we were on track to begin construction in September, 2020. The Master Site Plan also includes space for an expansion of the medical clinic building by another 8,000 SF, a Commercial building of 7,500 SF and a 12 unit Assisted Living Facility of 12,000 SF. Other than Medic One, Hospital District #2 plans to own the buildings and lease them to tenants. I've attached a schematic drawing from our architect that shows the layout of the Master Site Plan and also attached volume data for Medic One. The majority of Medic One transports are to KVH Hospital in Ellensburg, but they do transport patients to Yakima or the Seattle area. Out of County transports are significant, as they take an ambulance out of service for approximately 5 hours and traveling over the Pass or over Manastash Ridge in winter conditions can be quite hazardous. Healthcare services are also provided in Upper Kittitas County by the Open Door Clinic and a Mobile Dental Van. Hospital District #2 received a regular property tax levy of 0.203845/\$1000 valuation and an EMS levy of 0.190559/\$1000 valuation in 2019 to support operations of Medic One.

KVH (Hospital District #1) leases the Family Medicine Clinic in Cle Elum from HD#2 and employs the staff and providers in the clinic. One physician and 5 Advanced Practice Clinicians work in the Family Medicine Clinic. Specialty Services are also provided from this location and include integrated behavioral health, treatment for opioid use disorder, physical therapy, dietary consults, orthopedics, obstetrics, gynecology, dermatology and podiatry. The clinic has a limited lab service and x-ray capability. KVH also owns and operates an Urgent Care Clinic in Cle Elum which is staffed with an Advanced Practice Clinician, an RN and a tech. There are 4 exam rooms in the Urgent Care and they have point of care lab testing and x-ray capability.

In Ellensburg, KVH operates a full service Critical Access Hospital with 25 beds. KVH has an Emergency Department staffed 24/7 with a physician and 12 hours per day with an Advanced Practice Clinician. We are designated as a Level IV Trauma Center and a Level 2 stroke Center through the Washington State Department of Health. A Hospitalist physician staffs our Medical Surgical Unit (13 beds) and our Critical Care Unit (6 beds) 24/7. We operate a Swing Bed program on our Med-Surg Unit. Our Family Birthing Place has 3 LDRP rooms, 3 Post-partum beds and a surgical suite. We are a Level 1 Nursery. In addition to the inpatients, we have a hospital pharmacy, a 24/7 retail pharmacy, surgical services (3 operating rooms), medical outpatients, cardiopulmonary services, a laboratory (accredited by The Joint Commission), imaging and a wound care clinic within the hospital. Our Average Daily Census is 11 inpatient/observation patients and our Average Length of Stay is 2.9 days. KVH clinics in Ellensburg include ENT/Allergy, Pediatrics, Internal Medicine, Dermatology, Family Medicine, General Surgery, Women's Health, Orthopedics, Workplace Health, Home Health & Hospice, Physical Therapy, Occupational Therapy, and Speech Therapy. Our Geriatric Nurse Practitioner program supports the Skilled Nursing Facility and Assisted Living Facilities in Ellensburg by providing home visits to residents, although their offices are in the Family Medicine Ellensburg Clinic. I have included an excel spreadsheet that shows our physician, nursing, tech and medical assistant staffing in each location as requested.

Regarding KVH's planning for additional staffing, equipment and/or facilities for the next 10-20 years, we traditionally refresh our strategic plan every three years and were in the process of updating our strategic plan for 2021-2023 when the Covid-19 Pandemic hit Washington State. Capital facilities planning will be incorporated into our strategic planning when we are able to resume normal operations. Both Hospital Districts refer to the Community Health Assessment conducted by the Kittitas County Health Department, and the Community Health Improvement Plan which resulted from the Assessment, to ensure we our priorities align with the community. To project future needs, we utilize the DOH population assessment tools to determine the number providers needed per resident. KVH receives a property tax levy of 0.001911/\$1000 valuation to support KVH operations in 2019.

Both alternatives under consideration will have a significant impact on healthcare and we would anticipate having to double our facility space at Family Medicine Cle Elum, double our facility at the Urgent Care Center and add staff to our Home Health and Hospice team. Hospital District #2 would anticipate having to build additional ambulance/crew quarters adjacent to the development and staff an additional ambulance 24/7. We would anticipate having to increase services in each of our areas that provide services to Kittitas County as growth occurs through 2025-2057. In addition to this, we would anticipate the need for a Skilled Nursing Facility in Kittitas County as the County already has fewer SNF beds available to the residents of the County than is the projected need and two adult family homes in the Upper County area have recently closed. Both hospital districts would object to the medical office that is proposed in Alternative 6 as it would cause us to compete for scarce resources in a rural healthcare setting. Physicians, Registered Nurses, Advanced Practice Clinicians, Medical Assistants, Mental Health professionals and Physical Therapists are very difficult to recruit to a rural area. Alternative 6 is most concerning regarding the 627 RV sites as the folks coming into the area for recreation would likely lead to additional EMS call volume and transports. A roundtrip transport to KVH in Ellensburg takes an ambulance out of service for approx. 1.5-2 hours. If the transport is to Seattle or Yakima, the ambulance is out of service approx. 5 hours. Alternative 6 is also concerning as RV sites would not provide the tax base to support EMS in the community, so Hospital District #2 would need to provide additional services without the revenue to support it. Our current ambulance garage project is anticipated to cost \$4.5 million. An ambulance is an expense of \$300,000 each and are replaced annually when the mileage hits 150,000. It costs an additional \$126,000 to equip each ambulance. The Medic One Operations Manager has estimated the total cost to operate one ambulance is \$887,426 annually, so the tax base to support the EMS infrastructure is critical.

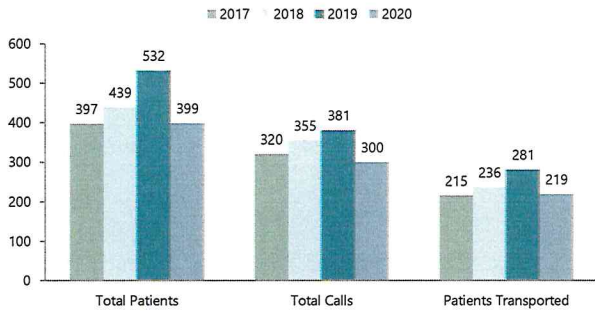
In summary, Alternative 5 seems the least harmful to the healthcare infrastructure in Kittitas County.

I would put a disclaimer on this response and let you know that because of KVH's current focus on the Covid-19 pandemic and the short turn-around time for the information requested, we have not had an opportunity to discuss this information request in detail with the Board of Commissioners of Hospital District #1 or Hospital District #2. Please let me know if you need clarification of any comments.

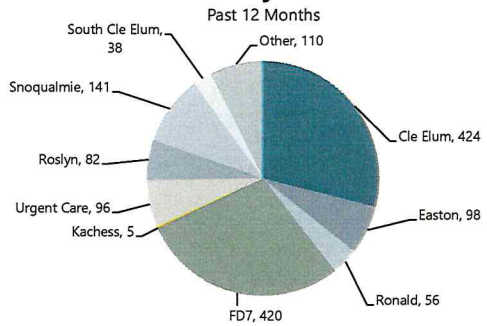
Thank you for giving us the opportunity to respond to the SEIS for this project.

Kittitas County Public Hospital District No. 2

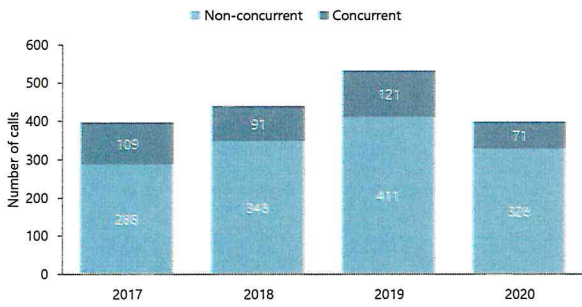
Volumes, YTD



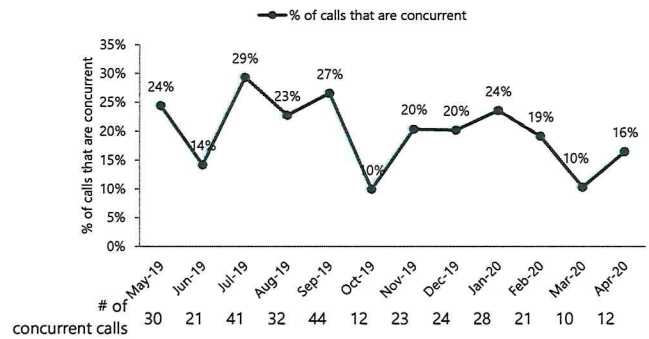
Calls by Zone



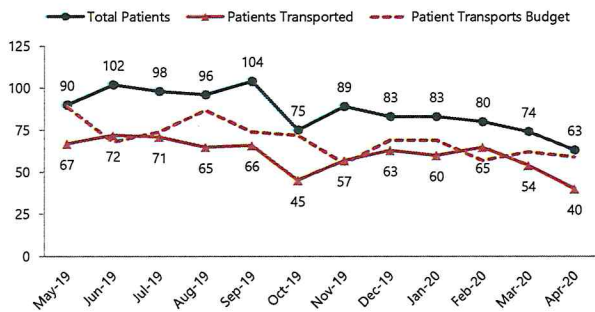
Concurrent Calls, YTD



Concurrent Calls



Patients and Transports



Days Cash on Hand



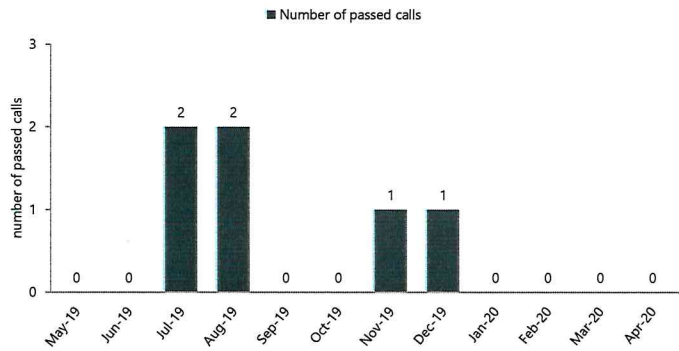
Kittitas County Public Hospital District No. 2

Turnout Time - Dispatch to Enroute

5/1/2019 to 4/30/2020

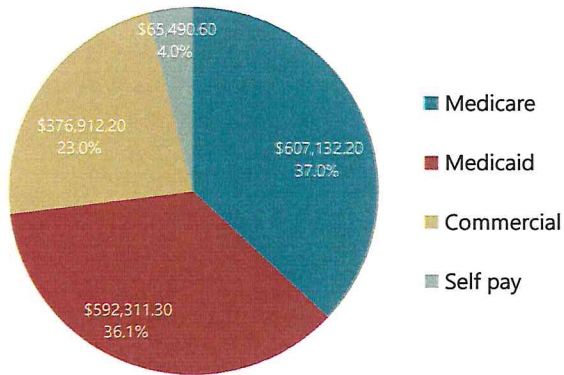
Apparatus	Responses	Turnout Time
A511 (CEFD)	2	2:32
<i>CEFD Overall</i>	2	2:32
A731 (FD7)	1	0:58
<i>FD7 Overall</i>	1	0:58
M931(HD2)	530	2:21
M991 (HD2)	811	1:50
M992 (HD2)	26	2:56
<i>HD2 Overall</i>	1367	2:03

Passed Calls



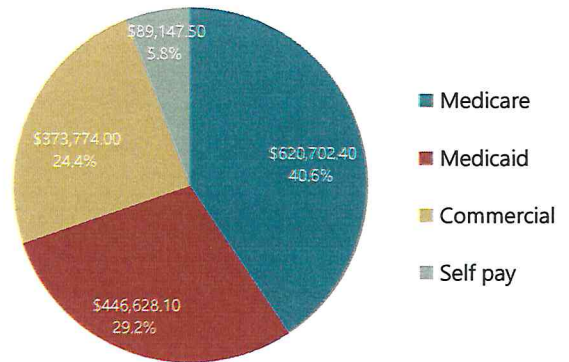
Payor Mix by Charges

1/1/2019 to 12/31/2019



Payor Mix by Charges

1/1/2018 to 12/31/2018



Kittitas Valley Community Hospital District #2
Statement of Revenue and Expense

MEDICAL BILLABLE RUNS	40	69	(29)	221	276	(55)	281
AVERAGE CHARGE PER RUN	1,940	2,072	(132)	1,974	2,072	(98)	2,123
	Current Month			Year to Date			Prior
	Actual	Budget	Variance	Actual	Budget	Variance	YTD
INTEREST INCOME	4,602	2,250	2,352	29,994	9,000	20,994	27,870
RENTAL INCOME	23,239	23,239	(0)	92,956	92,956	(0)	94,845
OTHER OPERATING REVENUE	18,493	100	18,393	20,253	400	19,853	1,266
AMBULANCE REVENUE	77,614	142,935	(65,321)	436,190	571,741	(135,551)	596,662
TOTAL REVENUE	123,948	168,524	(44,576)	579,393	674,097	(94,704)	720,643
CONTRACTUAL ADJUSTMENTS	29,881	64,259	(34,378)	170,233	257,036	(86,803)	201,871
BAD DEBT	3,842	8,132	(4,290)	22,358	32,531	(10,173)	30,006
CHARITY CARE	0	417	(417)	0	1,664	(1,664)	677
DEDUCTIONS FROM REVENUE	33,723	72,808	(39,085)	192,590	291,231	(98,641)	232,554
NET OPERATING REVENUE	90,225	95,716	(5,491)	386,803	382,866	3,937	488,090
SALARIES AND WAGES	83,495	83,320	175	341,177	333,280	7,897	315,695
EMPLOYEE BENEFITS	31,935	27,631	4,304	116,466	110,522	5,944	98,667
PROFESSIONAL FEES	0	3,258	(3,258)	14,731	13,036	1,695	9,614
SUPPLIES	11,233	11,028	205	57,961	44,106	13,855	50,854
UTILITIES	1,478	2,961	(1,483)	9,509	11,841	(2,332)	10,069
PURCHASED SERVICES	16,159	20,995	(4,836)	86,339	88,986	(2,647)	85,573
CEUCC SUBSIDY EXPENSE	15,622	15,622	0	62,489	62,490	(1)	61,263
DEPRECIATION	24,026	30,482	(6,456)	100,906	121,929	(21,024)	95,426
INSURANCE	2,194	2,350	(156)	8,376	9,400	(1,024)	8,323
LICENSES AND TAXES	172	1,644	(1,472)	3,444	6,573	(3,129)	5,403
INTEREST EXPENSE	11,609	11,609	(0)	46,435	46,433	2	50,539
TRAVEL AND EDUCATION	64	1,433	(1,369)	5,445	5,736	(291)	4,184
OTHER DIRECT EXPENSES	1,088	666	422	3,394	2,672	722	4,038
EXPENSES	199,076	212,999	(13,923)	856,671	857,004	(333)	799,648
OPERATING INCOME (LOSS)	(108,851)	(117,283)	8,432	(469,868)	(474,138)	4,270	(311,559)
TAX LEVY INCOME	122,737	124,070	(1,333)	492,081	496,285	(4,204)	460,434
NON-OPERATING BOND ISSUE CI	0	0	0	0	0	0	0
NET INCOME (LOSS)	13,886	6,787	7,099	22,212	22,147	65	148,875
DAYS CASH ON HAND	1004.0						
AR DAYS	69.6						
CURRENT RATIO	14.24						
COMMITTED CAPITAL FUNDS:							
2019 AMBULANCE	0.00						
2020 AMBULANCE	255,000						
AMBULANCE GARAGE	4,100,000						
TOTAL COMMITTED FUNDS	4,355,000.00						
DAYS CASH AFTER COMMITTED	276.0						

Kittitas Valley Community Hospital District #2
Statement of Revenue and Expense

MEDICAL BILLABLE RUNS	40	69	(29)	221	276	(55)	281
AVERAGE CHARGE PER RUN	1,940	2,072	(132)	1,974	2,072	(98)	2,123
	Current Month			Year to Date			Prior
	Actual	Budget	Variance	Actual	Budget	Variance	YTD
INTEREST INCOME	0	0	0	0	0	0	0
RENTAL INCOME	0	0	0	0	0	0	0
OTHER OPERATING REVENUE	0	100	(100)	1,760	400	1,360	1,266
AMBULANCE REVENUE	77,614	142,935	(65,321)	436,190	571,741	(135,551)	596,662
TOTAL REVENUE	77,614	143,035	(65,421)	437,950	572,141	(134,191)	597,928
CONTRACTUAL ADJUSTMENTS	29,881	64,259	(34,378)	170,233	257,036	(86,803)	201,871
BAD DEBT	3,842	8,132	(4,290)	22,358	32,531	(10,173)	30,006
CHARITY CARE	0	417	(417)	0	1,664	(1,664)	677
DEDUCTIONS FROM REVENUE	33,723	72,808	(39,085)	192,590	291,231	(98,641)	232,554
NET OPERATING REVENUE	43,891	70,227	(26,336)	245,360	280,910	(35,550)	365,375
SALARIES AND WAGES	83,633	83,112	521	338,873	332,444	6,429	315,297
EMPLOYEE BENEFITS	31,946	27,631	4,315	116,286	110,522	5,764	98,607
PROFESSIONAL FEES	0	0	0	0	0	0	0
SUPPLIES	11,233	11,028	205	57,931	44,106	13,825	50,824
UTILITIES	1,327	2,794	(1,467)	8,902	11,177	(2,275)	9,533
PURCHASED SERVICES	8,603	13,970	(5,367)	52,630	55,880	(3,250)	57,968
CEUCC SUBSIDY EXPENSE	0	0	0	0	0	0	0
DEPRECIATION	10,500	16,792	(6,292)	46,349	67,164	(20,815)	41,321
INSURANCE	738	625	113	2,328	2,500	(172)	1,942
LICENSES AND TAXES	172	0	172	3,444	0	3,444	5,403
INTEREST EXPENSE	0	0	0	0	0	0	0
TRAVEL AND EDUCATION	64	1,375	(1,311)	5,316	5,500	(184)	4,089
OTHER DIRECT EXPENSES	540	125	415	570	500	70	1,202
EXPENSES	148,756	157,452	(8,696)	632,630	629,793	2,837	586,187
OPERATING INCOME (LOSS)	(104,865)	(87,225)	(17,640)	(387,270)	(348,883)	(38,387)	(220,812)
TAX LEVY INCOME	59,301	59,772	(471)	237,750	239,089	(1,339)	225,428
NON-OPERATING BOND ISSUE C	0	0	0	0	0	0	0
NET INCOME (LOSS)	(45,564)	(27,453)	(18,111)	(149,519)	(109,794)	(39,725)	4,616

Kittitas Valley Community Hospital District #2
Statement of Revenue and Expense

	Current Month			Year to Date			Prior
	Actual	Budget	Variance	Actual	Budget	Variance	YTD
INTEREST INCOME	4,602	2,250	2,352	29,994	9,000	20,994	27,870
RENTAL INCOME	23,239	23,239	(0)	92,956	92,956	(0)	94,845
OTHER OPERATING REVENUE	18,493	0	18,493	18,493	0	18,493	0
AMBULANCE REVENUE	0	0	0	0	0	0	0
TOTAL REVENUE	46,334	25,489	20,845	141,443	101,956	39,487	122,715
CONTRACTUAL ADJUSTMENTS	0	0	0	0	0	0	0
BAD DEBT	0	0	0	0	0	0	0
CHARITY CARE	0	0	0	0	0	0	0
DEDUCTIONS FROM REVENUE	0	0	0	0	0	0	0
NET OPERATING REVENUE	46,334	25,489	20,845	141,443	101,956	39,487	122,715
SALARIES AND WAGES	(137)	208	(345)	2,304	836	1,468	398
EMPLOYEE BENEFITS	(11)	0	(11)	180	0	180	60
PROFESSIONAL FEES	0	3,258	(3,258)	14,731	13,036	1,695	9,614
SUPPLIES	0	0	0	29	0	29	29
UTILITIES	151	167	(16)	607	664	(57)	536
PURCHASED SERVICES	7,556	7,025	531	33,710	33,106	604	27,605
CEUCC SUBSIDY EXPENSE	15,622	15,622	0	62,489	62,490	(1)	61,263
DEPRECIATION	13,526	13,690	(164)	54,556	54,765	(209)	54,106
INSURANCE	1,456	1,725	(269)	6,047	6,900	(853)	6,381
LICENSES AND TAXES	0	1,644	(1,644)	0	6,573	(6,573)	0
INTEREST EXPENSE	11,609	11,609	(0)	46,435	46,433	2	50,539
TRAVEL AND EDUCATION	0	58	(58)	129	236	(107)	95
OTHER DIRECT EXPENSES	548	541	7	2,824	2,172	652	2,835
EXPENSES	50,320	55,547	(5,227)	224,041	227,211	(3,170)	213,462
OPERATING INCOME (LOSS)	(3,986)	(30,058)	26,072	(82,598)	(125,255)	42,657	(90,747)
TAX LEVY INCOME	63,437	64,298	(861)	254,330	257,196	(2,866)	235,006
NON-OPERATING BOND ISSUE CI	0	0	0	0	0	0	0
NET INCOME (LOSS)	59,450	34,240	25,210	171,732	131,941	39,791	144,259
DAYS CASH ON HAND	1004.0						
AR DAYS	69.6						
CURRENT RATIO	14.24						
COMMITTED CAPITAL FUNDS:							
2019 AMBULANCE	0.00						
2020 AMBULANCE	255,000						
AMBULANCE GARAGE	4,100,000						
TOTAL COMMITTED FUNDS	4,355,000.00						
DAYS CASH AFTER COMMITTED	276.0						

Kittitas County Hospital Dist 2

Balance Sheet

	<u>Year to Date</u>	<u>Prior Year End</u>	<u>Change</u>
CASH	3,678,414	4,094,414	(416,000)
ACCOUNTS RECEIVABLE	144,931	172,928	(27,996)
TAXES RECEIVABLE	1,394,144	40,928	1,353,216
PREPAIDS	32,544	3,918	28,626
INVESTMENTS	2,307,348	2,289,190	18,159
CURRENT ASSETS	7,557,381	6,601,377	956,004
LAND	843,524	843,524	0
PROPERTY, PLANT, & EQUIPMENT	6,604,229	6,532,311	71,918
ACCUMULATED DEPRECIATION	(3,458,806)	(3,357,901)	(100,906)
NON CURRENT ASSETS	3,988,947	4,017,935	(28,988)
NET PENSION ASSET	204,890	204,890	0
DEFERRED OUTFLOWS	57,775	57,775	0
ASSETS	11,808,994	10,881,977	927,017
ACCOUNTS PAYABLE	38,179	42,674	(4,495)
INTEREST PAYABLE	58,306	11,871	46,435
ACCRUED PAYROLL	13,776	28,416	(14,640)
ACCRUED BENEFITS	80,227	66,907	13,320
CEUCC SUBSIDY PAYABLE	62,489	183,790	(121,301)
CURRENT PORTION REVENUE BOND - LTGO	278,985	278,985	0
CURRENT LIABILITIES	531,961	612,643	(80,682)
LONG TERM REVENUE BOND - LTGO	3,910,624	3,910,624	0
NET PENSION LIABILITY	199,089	199,089	0
DEFERRED INFLOWS - PENSION	352,779	352,779	0
DEFERRED INFLOWS - LEVY	985,486	0	985,486
NONCURRENT LIABILITIES	5,447,978	4,462,492	985,486
LIABILITIES	5,979,939	5,075,135	904,804
NET INCOME (LOSS)	22,212	0	22,212
UNRESTRICTED FUND BALANCE	5,806,842	5,806,842	0
FUND BALANCE	5,829,055	5,806,842	22,212
TOTAL LIABILITIES AND NET POSITION	11,808,994	10,881,977	927,017

Kittitas County Hospital Dist 2

Statement of Cash Flows

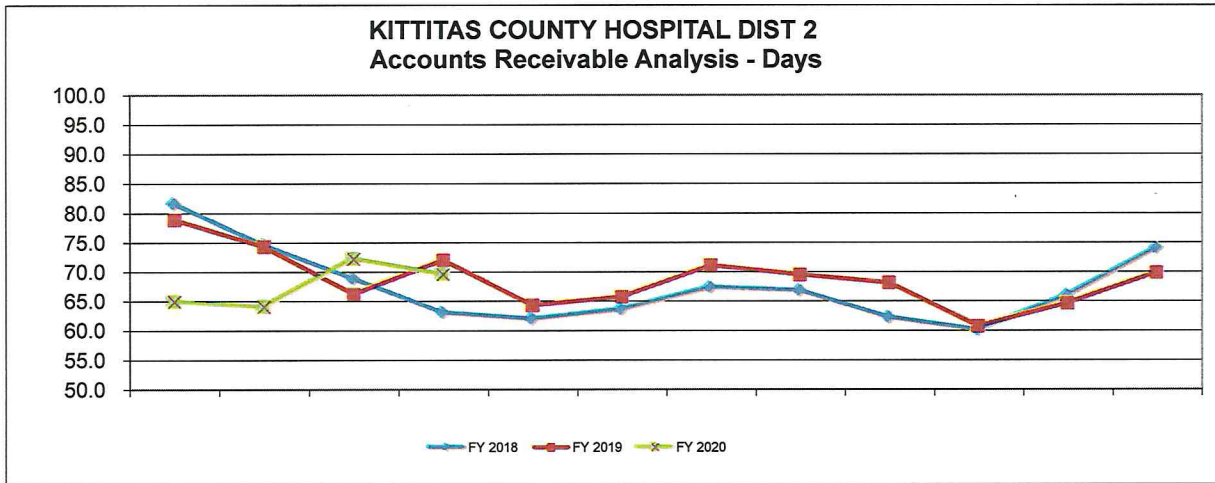
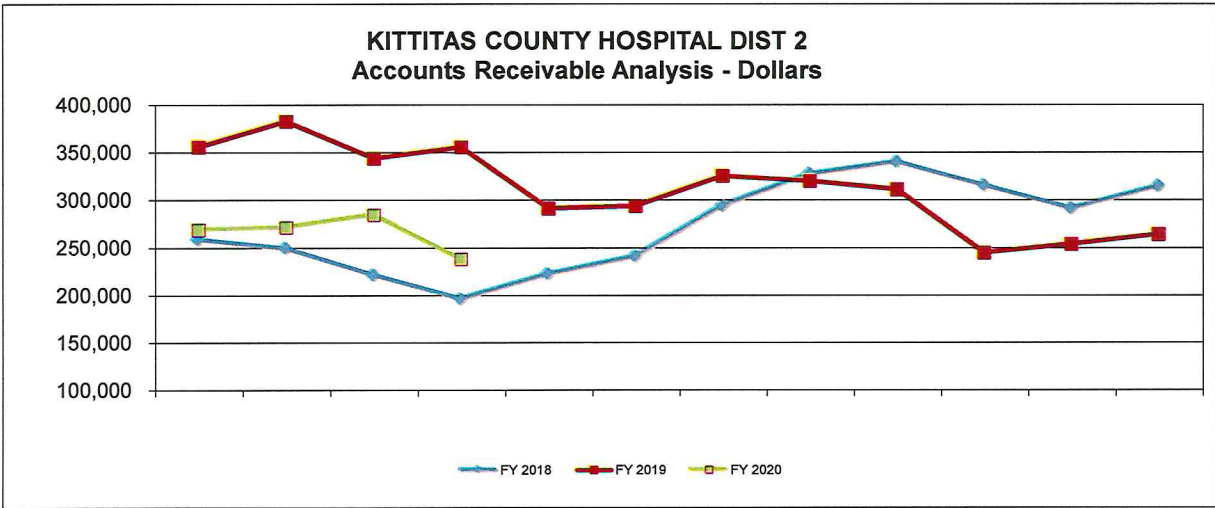
	<u>CASH</u>
NET BOOK INCOME	22,212
ADD BACK NON-CASH EXPENSE	
DEPRECIATION	100,906
NET CASH FROM OPERATIONS	123,118
CHANGE IN CURRENT ASSETS	
PATIENT ACCOUNTS AND OTHER RECEIVABLES	27,996
PROPERTY TAX RECEIVABLE	(1,353,216)
PREPAID EXPENSE	(28,626)
TOTAL CHANGE IN CURRENT ASSETS	(1,353,846)
PURCHASE OF PROPERTY, PLANT & EQUIPMENT	(71,918)
NET PENSION ASSET	0
DEFERRED OUTFLOWS	0
INCREASE IN INVESTMENTS	(18,159)
PROCEEDS FROM SALE/MATURITY OF INVESTMENTS	
TOTAL CHANGE IN ASSETS	(1,443,922)
CHANGES IN CURRENT LIABILITIES	
ACCOUNTS PAYABLE	(4,495)
INTEREST PAYABLE	46,435
ACCRUED PAYROLL	(14,640)
ACCRUED BENEFITS	13,320
CEUCC SUBSIDY PAYABLE	(121,301)
TOTAL CHANGE CURRENT LIABILITIES	(80,682)
PRINCIPLE PAYMENT ON REVENUE BOND	0
NET PENSION LIABILITY	0
DEFERRED INFLOWS OF RESOURCES	985,486
NET CHANGE IN CASH	(416,000)
BEGINNING CASH ON HAND	4,094,414
ENDING CASH ON HAND	3,678,414



KITTITAS COUNTY HOSPITAL DIST 2
Accounts Receivable Analysis

SYS DESIGN EMS

	Apr-19	Mar-20	Feb-20	Jan-20	Dec-19	Nov-19	Oct-19	Sep-19	Aug-19	Jul-19	Jun-19	May-19
A/R Dollars	238,171	\$ 284,511	\$ 271,344	268,798	264,049	253,901	244,897	311,152	320,080	325,523	294,088	291,452
A/R Days	69.6	72	64	65	70	64.6	60.7	68.2	69.5	71.2	65.8	64.3





KITTITAS COUNTY HOSPITAL DIST 2

BOARD MEETING APRIL 2020 ACTIVITY

ACCOUNTS PAYABLE WARRANTS/ EFTS TO BE APPROVED

CHECK DATE:

# 1 WARRANT NUMBERS:	11227-11252	NET AMOUNT:	\$35,885.49	6-Apr-20
# 2 WARRANT NUMBERS:	11253-11297	NET AMOUNT:	\$96,835.29	20-Apr-20
# 3 WARRANT NUMBERS:	11298-11299	NET AMOUNT:	\$7,729.50	22-Apr-20
# 4 WARRANT NUMBERS:	11300-11301	NET AMOUNT:	\$3,022.05	30-Apr-20
			<u>\$143,472.33</u>	

PAYROLL WARRANTS / EFTS TO BE APPROVED

PPE 03-28-2020	NET AMOUNT:	\$27,164.54	3-Apr-20
PPE 04-11-2020	NET AMOUNT:	\$25,350.10	17-Apr-20
		<u>\$52,514.64</u>	

TOTAL NET WARRANTS & EFT'S

\$195,986.97

Upper Kittitas County Public Hospital District #2
 Detailed Statement of Accounts Payable Transactions
 Month of April 2020



Account Class	Check No	Vendor	Amount	
Balance Sheet	11234	DEPARTMENT OF RETIREMENT SYSTEMS	718.20	
	11235	DEPARTMENT OF RETIREMENT SYSTEMS	3214.64	
	11236	DIMARTINO ASSOCIATES	15.00	
	11240	IAFF 4880	1273.00	
	11253	AFLAC	716.15	
	11264	DEPARTMENT OF LABOR & INDUSTRIES	3186.43	
	11265	DEPARTMENT OF RETIREMENT SYSTEMS	3126.59	
	11266	DEPARTMENT OF RETIREMENT SYSTEMS	586.20	
	11267	DIMARTINO ASSOCIATES	108.36	
	11269	EMPLOYMENT SECURITY DEPARTMENT	600.48	
	11270	EMPLOYMENT SECURITY DEPARTMENT	567.82	
	11271	HAMILTON MEDICAL	19980.00	
	11273	IAFF 4880	1260.00	
	11280	KDA ARCHITECTURE INC	38341.90	
	11281	KITTCOM	13320.16	
	Employee Benefits	11233	DEPARTMENT OF RETIREMENT SYSTEMS	25.00
		11235	DEPARTMENT OF RETIREMENT SYSTEMS	2131.21
11236		DIMARTINO ASSOCIATES	93.36	
11252		VIMLY BENEFIT SOLUTIONS	18911.34	
11255		BETH WILLIAMS	30.00	
11257		CAROL JACQUES	15.00	
11261		CRAIG HALLMARK	30.00	
11263		DENISON HOOD-LEWIS	15.00	
11265		DEPARTMENT OF RETIREMENT SYSTEMS	2024.02	
11268		EMILY BLAKLEY	15.00	
11278		JASON BOITANO	30.00	
11279		JIM SCHOEGGL	15.00	
11285		MARK VAN MAREN	45.00	
11286		MATT SCHAUER	30.00	
11290		NATE HENDERSON	15.00	
11293		SONYA VRAVES	30.00	
Supplies		11296	VIMLY BENEFIT SOLUTIONS	900.00
	11227	ABBOTT LABORATORIES INC	270.00	
	11228	CARDINAL HEALTH 112, LLC	24.87	
	11228	CARDINAL HEALTH 112, LLC	24.87	
	11238	GALLS, LLC	177.10	
	11238	GALLS, LLC	110.36	
	11238	GALLS, LLC	114.71	
	11239	GEOFF SCHERER	412.65	
	11242	JAMES OIL CO., INC.	584.17	
	11244	LIFE ASSIST, INC.	1134.45	
	11244	LIFE ASSIST, INC.	272.31	

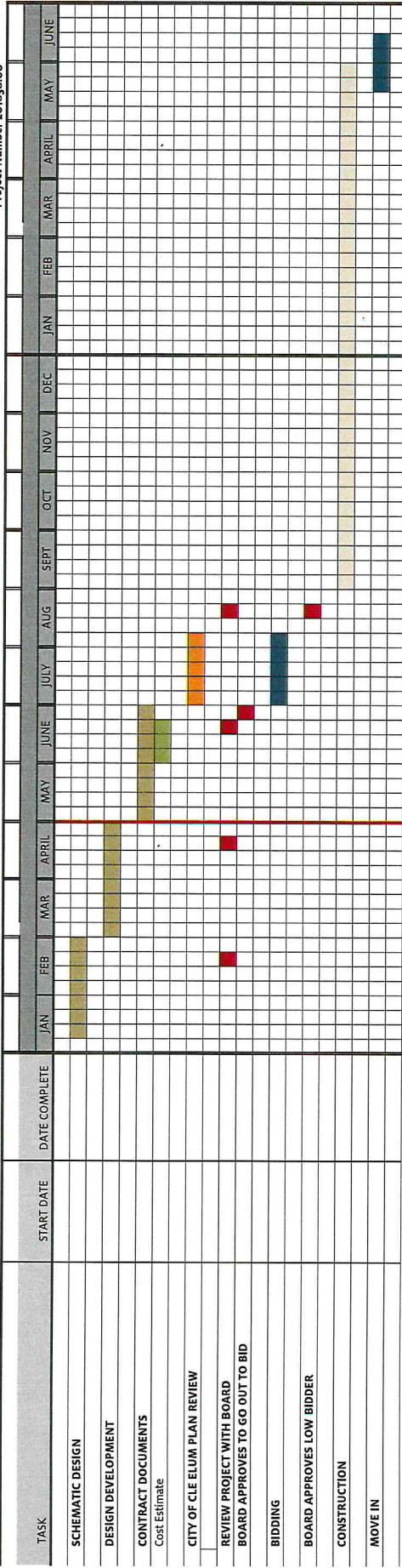
11244 LIFE ASSIST, INC.	306.29
11244 LIFE ASSIST, INC.	138.29
11248 OXARC INC	120.05
11248 OXARC INC	193.17
11248 OXARC INC	211.45
11250 STRYKER SALES CORP	295.65
11250 STRYKER SALES CORP	141.16
11250 STRYKER SALES CORP	293.76
11254 AMAZON	50.75
11254 AMAZON	-50.75
11254 AMAZON	121.75
11254 AMAZON	121.75
11254 AMAZON	123.10
11254 AMAZON	377.99
11254 AMAZON	-121.75
11254 AMAZON	-123.10
11254 AMAZON	-121.75
11254 AMAZON	-377.99
11256 CARDINAL HEALTHCARE	44.88
11262 DAKODA FENTER	118.70
11277 JAMES OIL CO., INC.	314.60
11282 KITTITAS COUNTY TREASURER	4.91
11282 KITTITAS COUNTY TREASURER	4.91
11282 KITTITAS COUNTY TREASURER	4.91
11282 KITTITAS COUNTY TREASURER	4.91
11282 KITTITAS COUNTY TREASURER	4.92
11282 KITTITAS COUNTY TREASURER	4.91
11283 KITTITAS VALLEY HEALTHCARE	193.60
11283 KITTITAS VALLEY HEALTHCARE	193.62
11284 LIFE ASSIST, INC.	716.63
11284 LIFE ASSIST, INC.	444.79
11291 OXARC INC	515.85
11291 OXARC INC	271.38
11291 OXARC INC	120.05
11291 OXARC INC	807.65
11294 STATE DEPARTMENT OF TRANSPORTATION	1236.60
11297 WAPITI OFFICE	44.82
11298 AMAZON	50.75
11298 AMAZON	121.75
11298 AMAZON	123.10
11298 AMAZON	377.99
11298 AMAZON	53.94
11229 CENTURYLINK	115.26
11230 CITY OF CLE ELUM	110.46
11230 CITY OF CLE ELUM	106.84
11230 CITY OF CLE ELUM	492.82
11237 DISH NETWORK	124.94
11243 KITTITAS COUNTY FIRE DISTRICT #7	200.00
11245 MCI	36.80

Utilities

	11249 PUGET SOUND ENERGY	28.20
	11249 PUGET SOUND ENERGY	331.90
	11249 PUGET SOUND ENERGY	135.19
	11249 PUGET SOUND ENERGY	259.49
	11249 PUGET SOUND ENERGY	10.45
	11251 VERIZON	496.98
	11258 CITY OF CLE ELUM	492.82
	11258 CITY OF CLE ELUM	112.88
	11258 CITY OF CLE ELUM	106.84
	11274 INLAND NETWORKS	150.00
	11274 INLAND NETWORKS	91.76
	11292 PUGET SOUND ENERGY	106.59
	11292 PUGET SOUND ENERGY	10.45
	11292 PUGET SOUND ENERGY	274.72
	11292 PUGET SOUND ENERGY	206.44
Purchased Services	11231 COLE GRAVEL	129.95
	11241 JACKSON HORSLEY	400.00
	11243 KITTITAS COUNTY FIRE DISTRICT #7	317.51
	11243 KITTITAS COUNTY FIRE DISTRICT #7	438.02
	11246 MICROSOFT	405.01
	11250 STRYKER SALES CORP	80.16
	11259 CLE ELUM FARM & HOME	97.18
	11260 CLE ELUM HARDWARE & RENTAL	12.94
	11260 CLE ELUM HARDWARE & RENTAL	44.24
	11260 CLE ELUM HARDWARE & RENTAL	32.32
	11260 CLE ELUM HARDWARE & RENTAL	97.10
	11260 CLE ELUM HARDWARE & RENTAL	21.58
	11276 JACKSON HORSLEY	400.00
	11287 MCGUIRES LANDSCAPING & WINTER SVC LLC	97.20
	11289 MICROSOFT	405.01
	11289 MICROSOFT	7.57
	11295 SYSTEMS DESIGN	1345.05
	11299 KITTITAS VALLEY HEALTHCARE	2880.95
	11299 KITTITAS VALLEY HEALTHCARE	4916.36
Insurance	11272 HUB INTERNATIONAL LLC	1158.84
Licenses & Taxes	11300 DEPARTMENT OF REVENUE-EXCISE	3022.05
Travel & Education	11172 SONYA VRAVES	-428.25

PROJECT SCHEDULE
 KCPHD #2 AMBULANCE GARAGE

KDA ARCHITECTURE
 Project Number 201836.00



REVISION | DATE

REVISION	DATE

KDA ARCHITECTURE
 1700 S. 10th Street, Suite 100
 Lincoln, NE 68502
 Phone: (402) 441-1111
 Fax: (402) 441-1112
 Email: info@kda.com
 Website: www.kda.com

KDA ARCHITECTURE
 1700 S. 10th Street, Suite 100
 Lincoln, NE 68502
 Phone: (402) 441-1111
 Fax: (402) 441-1112
 Email: info@kda.com
 Website: www.kda.com



Ambulance
 Garage

KCPH District 2

150 S. 10th Street
 Lincoln, NE 68502

DATE: 05/06/2020

SCALE:

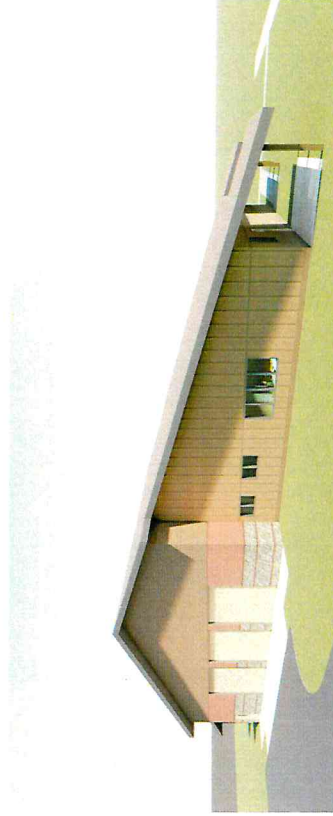
DRAWN: Author

JOB: 201838

Exterior
 Perspectives

SHEET:

G0.5



REVISION	DATE

1110 15th Avenue, Suite 100
 98108 Seattle, WA
 206.461.1111
 www.kda.com

KDA ARCHITECTURE



Ambulance
Garage

KCPH District 2
 6000th, WA 98032

DATE: 05/04/20
 SCALE: AS SHOWN
 DRAWN: RHM
 JOB: 20163.8

Exterior
Elevations

SHEET:
A4.1

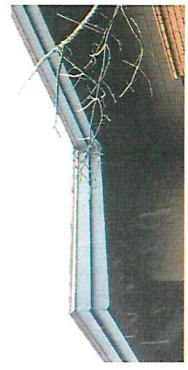
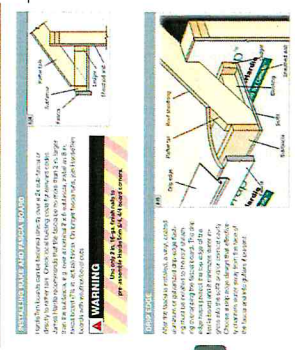
MATERIAL KEYNOTES



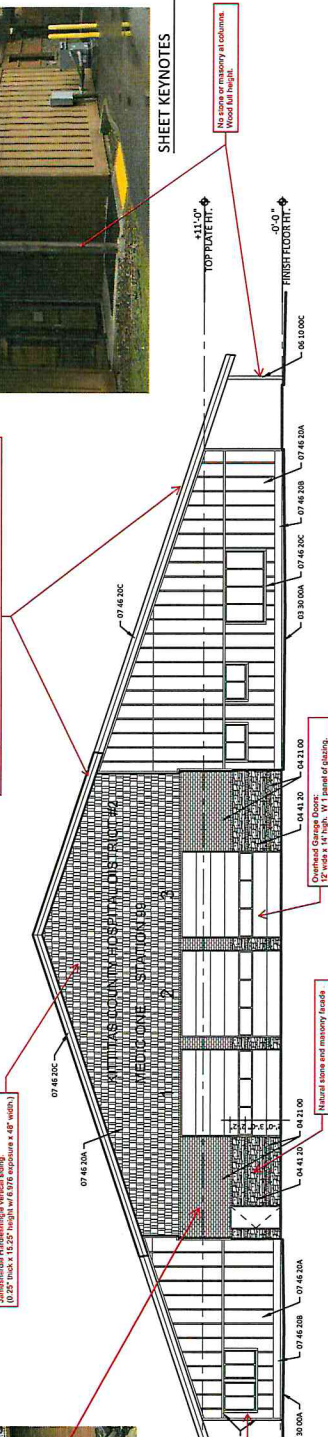
SHEET KEYNOTES

No stone or masonry at columns.
Wood full height.

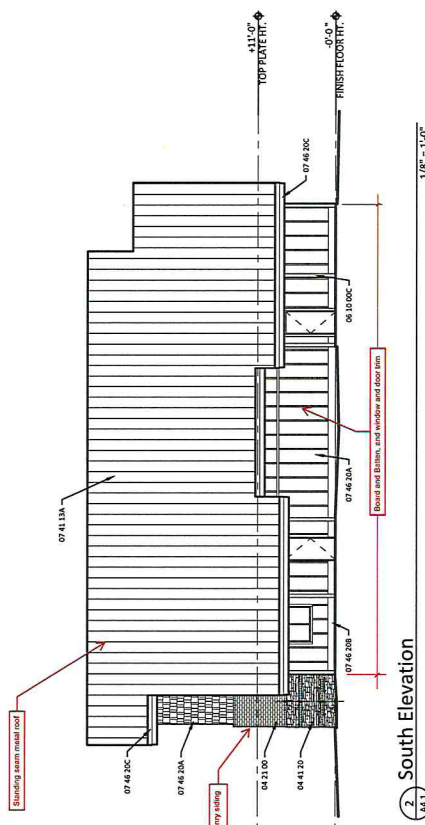
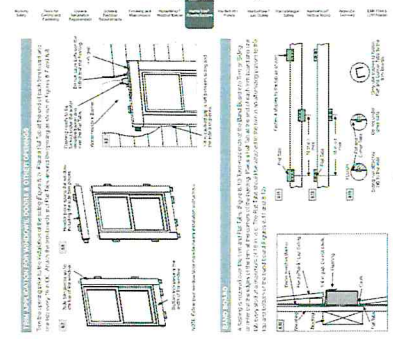
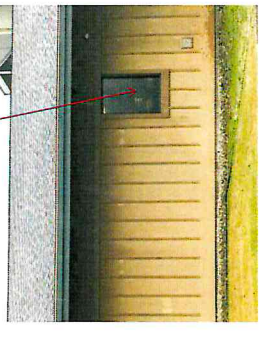
Installation of HardieTrim® 5/4, 4/4 & 1/2" Back Grooved Boards



Typical wood trim details:
 - 1/2" HardieTrim® 5/4, 4/4 & 1/2" Back Grooved Boards
 - 1/2" HardieTrim® 5/4, 4/4 & 1/2" Back Grooved Boards
 - 1/2" HardieTrim® 5/4, 4/4 & 1/2" Back Grooved Boards



1 West Elevation
A4.1





**Kittitas Valley Healthcare
Small Works Roster - HD1 and HD2**

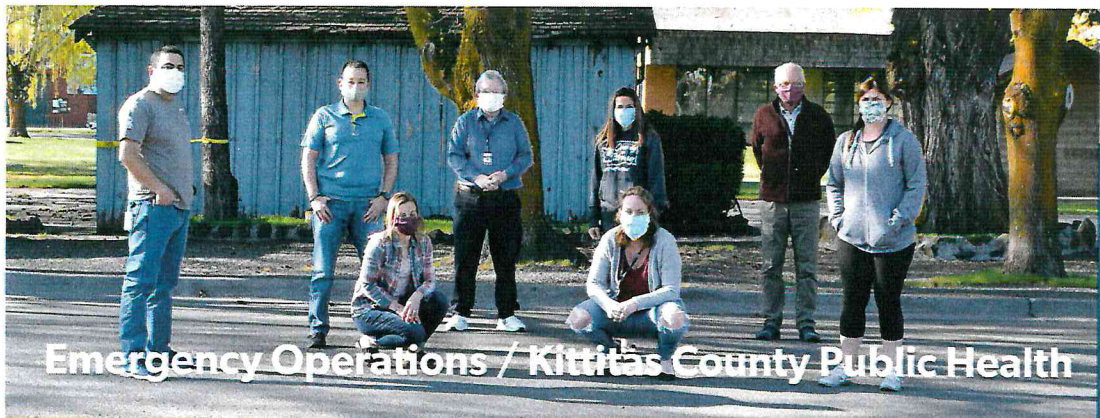
Service/Contractor Architect	Contractor #	Phone	Email	Date Invitation Sent	Date Implimented	Notes
KDA		509-930-2980	Brian.Andrings@KDAArchitecture.com	1/10/2020	1/10/2020	
Asbestos Abatement						
Tri-Valley	TRIVAC1055KP	509-452-4098		1/13/2020	1/21/2020	
Boiler Service						
Proctor Sales factory authorized service agent for Aerco			sbader@GoPsi.com	1/2/2020		Aerco boilers and old boiler 2018
Yakima Mechanical		509-469-2773	jessetristate@gmail.com	1/2/2020	1/3/2020	Old boiler and hot water heaters
Ceiling Systems						
Dennis Clark Acoustical	DENNICA101KA	509-945-2616	denniscacs@gmail.com	1/2/2020		
Chemical Treatment Systems						
CH2O	CH2O11*918ML	509-961-8729	dliefferis@ch2o.com	1/2/2020	1/3/2020	Derry Jefferis
Demolition						
Skycorp	SKYCOL*899DD	360-926-8989	skycorpltd@yahoo.com		1/31/2018	
VK Powell	VKPOWCL007QT	509-248-8148	bob@vkpowell.com	1/2/2020	1/2/2020	Bob Elkey
Duct and Airhandler Cleaning						
Adler Ventilation		206-423-6970	chad@adlervent.com	1/2/2020		
Prevent		925-570-4310	SteveT@prevent-iss.com	1/2/2020		
Patchman Custom Drywall		509-607-4596	patchmancustomdrywall@gmail.com			
Electrical						
Knobels	KNOBEE145RU	509-452-9157	knobelselectric@msn.com	1/2/2020		Steve cell 945-3460
Picatti Bros	PICATB*820DR	509-658-7367	info@picatti.com	1/2/2020	2/7/2020	
Catlin Electric		509-925-4460	katiecatlin85@gmail.com	1/2/2020		
Fire Alarm						
Johnson Controls	JOHNSC*272OS	800-826-6676	Terry.L.Winzenburg@jci.com	1/2/2020	1/3/2020	Johnson Controls Metasys system is our HVAC control system. Control additions must be this system. Johnson is also Simplex fire alarm systems.
Mansfield/Guardian Security	UBI: 600189667	509-941-8090	randerson@guardiansecurity.com	1/2/2020	1/6/2020	Monitoring and contracting

**Kittitas Valley Healthcare
Small Works Roster - HD1 and HD2**

Service/Contractor	Contractor #	Phone	Email	Date Invitation Sent	Date Implimented	Notes
ATS Facility Systems	WA-603150325	509-228-3700	cthompson@atsfsi.com	1/2/2020	5/31/2019	Used on MAC project. Was very dissatisfied. Did not include system design. Had to add power supplies that sales missed. Was hard to coordinate with Aaron.
Fire Suppression						
Inland Fire Protection	INLANFP161ML	509-248-4471	chelsea@inlandfireprotection.com	1/2/2020	1/2/2020	Troy Sevigny small project lead 509-728-2506
General Contractors						
VK Powell	VKPOWCL007QT	509-248-8148	bob@vkpowell.com	1/2/2020	1/31/2018	Bob Elkey
Generators						
Cummings NW factory authorized cummings service agent		509-248-9033	bryan.burke@cummins.com	1/2/2020		
Grounds Care and Landscape						
Central Landscaping		509-925-4553	centralnurseryh2o@fairpoint.net	1/2/2020	Not 2018	Does not have spray licence, does not have large equipment for landscaping or tree trimming.
Elevation Landscaping	ELEVACI915B6	509-968-4024	elevation@etreellc.com	1/2/2020	1/17/2020	
Russell's Nursey (Roots)	ROOTSNL832C4	509- 966-0698	bryan@rootsyakima.com	1/2/2020	1/2/2020	
HVAC						
All Seasons	AL-LS-EH-A 265Q2	509-248-6380	russf@allseasonsheating.com	1/2/2020	1/2/2020	Russ Frenzel
Yakima Mechanical		509-469-2773	jessetristate@gmail.com	1/2/2020		
HVAC Controls						
Automated Controls	AUTOMBC984QK	425-823-6200	Dan Compton < DanC@automatedbcs.com >	1/2/2020	1/6/2020	Johnson Controls Metasys system is our HVAC control system. Control additions must be this system. Automated is a certified Metasys contractor

**Kittitas Valley Healthcare
Small Works Roster - HD1 and HD2**

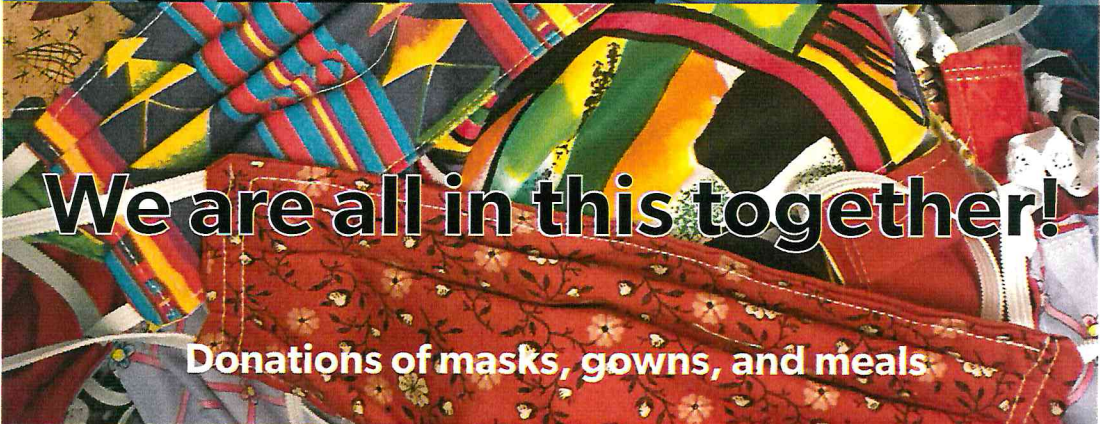
Service/Contractor	Contractor #	Phone	Email	Date Invitation Sent	Date Implemented	Notes
Johnson Controls lift	JOHNSC*2720S	800-826-6676	Terry.L.Winzenburg@jci.com	1/2/2020	1/3/2020	Johnson Controls Metasys system is our HVAC control system. Control additions must be this system. Johnson is also Simplex fire alarm systems.
Knutson Crane		509-925-5438	Knutsoncrane@yahoo.com	1/2/2020	1/31/2018	
Russel Crane	RUSSEI*21204	509-457-6341		1/13/2020	1/21/2020	
Monitoring Company						
Mansfield/Guardian Security	UBI: 600189667	509-941-8090	randerson@guardiansecurity.com	1/2/2020	2/18/2019	Monitoring and contracting
Nurse Call System						
Evco	EVCOSE1151BM	888-535-3826	dmurphy@evcosound.com	1/2/2020	1/3/2020	Nurse call and cameras
Cabling and technology Systems (CTS)	CTS**TS881BK	253-2985463	michaelb@cablects.com	1/2/2020		Nurse call and security
Harris Office		509-248-2980	angie@harrisoffice.com	1/2/2020		
Painting						
JJ's Painting & Home Projects	45WB082807	509-853-7481	jspainting.projects@gmail.com	1/2/2020	1/31/2018	
PA Systems						
Sousley Sound and Communication						
Paving/asphalt repair/Striping						
Central Paving	CENTRPL856RJ	509-929-1044	team@centralpavingllc.com	1/2/2020	1/2/2020	
Northwest Asphalt Striping and Sealing		509-452-0170	chase@northweststripingco.com	1/2/2020		
CM Custom Service	CMCUSC885RE	509-929-2554	mabbttc@gmail.com	1/2/2020	1/31/2018	
Paver Installation						
All Seasons	ALLSEC1009B6	509-968-9310	rodhey@ascharandscape.com	1/2/2020	1/2/2020	They just do pavers, no concrete. Recommended by Bill of VKP
Plumbing/Mech						
Apollo	APOLLMC864JQ	509-727-0298	lmuller@apollosolutionsgroup.com	1/2/2020	1/16/2020	Lance operations manager
McKinstry	MCKINCL942DW	509-728-3042	RodM@McKinstry.com	1/2/2020	1/2/2020	Rod Mathes
Roofing						
Flynn	FLYNNBL820JE	509-455-4043	Kasi.Smith@flynncompanies.com	3/6/2020	3/6/2020	



Emergency Operations / Kittitas County Public Health



Community Encouragement & Support



We are all in this together!

Donations of masks, gowns, and meals



First Responders / UKC Medic One



KVH Staff

